



# FERN CREEK/HIGHVIEW UNITED MINISTRIES NEWS

Volume 8  
Issue 2

AUTUMN  
2006

7502 Tangelo Drive, Louisville, KY 40228 / Central Office: (502) 239-7407, Fax: (502) 239-7454

## MEMBER CHURCHES

Beulah Presbyterian  
Cedar Creek Baptist  
Fern Creek Baptist  
Fern Creek Christian  
Fern Creek United Methodist  
Good Shepherd  
Highview Baptist  
Lighthouse Christian Center  
Louisville Chinese Christian  
New Vision Ministry Center  
St. Alban's Episcopal  
St. Bernard Catholic  
St. Gabriel Catholic  
St. Stephen C.E.C.  
St. Stephen Lutheran  
Seaton Park Baptist  
Solid Rock Church of God  
Summit Heights United  
Methodist  
Trinity World Outreach  
Center  
and the  
Fern Creek/Highview  
Ministerial Association

**VISIT OUR WEBSITE  
FCHUM.ORG**

## BUILDING TO SERVE

Now is the time, now is the need.

**THE BULLDOZERS ARE COMING!  
LOOK INSIDE FOR HOW YOU CAN HELP  
IMPACT THOUSANDS OF LIVES IN THE  
FERN CREEK/HIGHVIEW COMMUNITIES!**

**16<sup>th</sup> ANNIVERSARY OPEN HOUSE  
ADULT DAY CENTER CELEBRATION,  
COMMUNITY HUNGER WALK, FALL  
FESTIVALS, HOLIDAY CHEER,  
JEFFERSON MALL TIME OF GIVING,  
COMMUNITY EVENTS, HOLIDAY EVENTS,  
See inside for more information!**

## JEFFERSON MALL TIME OF GIVING

What would you give for an "exclusive" evening of shopping?  
A \$5 donation to Fern Creek/Highview United Ministries opens the doors to Jefferson Mall on Sunday evening, November 12<sup>th</sup> from 6-9 pm. Each "shopper" receives a coupon book with discounts and coupons good for that evening only, and evening of shopping, savings and fun! Radio personality George Lindsay and the MAX Morning Show will provide entertainment, Santa will visit (children under 12 free with a paid adult), and door prizes given out throughout the evening. All stores will be open for this special evening of "exclusive" shopping. And better yet, the entire \$5 donation comes to FCHUM to help us help others! Board members from our churches will have the special tickets for this evening or you can call our office at 239-7407 for more information!

Join us on Saturday evening, Nov. 4<sup>th</sup> at 7:00 pm  
@ St. Bernard Catholic Church for our

### **8<sup>th</sup> Annual James O. Leach Hunger Awareness Dinner.**

A simple meal of soup and bread will be provided as we learn about the needs in Louisville and how FCHUM does its part in feeding those in need in the Fern Creek and Highview communities. Call our office 239-7407 for ticket information.

## Fern Creek/ Highview United Ministries Programs

### INDIVIDUAL & FAMILY ASSISTANCE CENTER -

Renee Bryant, MSW, Director

**We helped 470 children with school supplies through our "Back to School" program this year. We also provided supplies to the Family Resource Centers in several of our schools.**

### THANK YOU EVERYBODY!

*Through the grace of God strangers become family!*

**CAN YOU BELIEVE IT IS LESS THAN 100 DAYS TO CHRISTMAS? AND THANKSGIVING IS JUST AROUND THE CORNER!**

Please look at the **Holiday Cheer** information in this issue to find out how you can help us help others.

Please call Renee or Jana at 762-0630 or e-mail at [ifacdir@fchum.org](mailto:ifacdir@fchum.org) for more information.

### FCHUM IFAC ASSISTANT & DEVELOPMENT COORDINATOR

In addition to working part-time in our IFAC program, Jana also coordinates development activities in grant funding and management, program development and fund-raising. Look at the Jefferson Mall Time of Giving information in this issue for one way you can have fun and help others at the same time. If you are interested in volunteering to help with fund-raising and special events you can contact Jana at 239-7407 between 2:00 and 4:00 or e-mail at [dev@fchum.org](mailto:dev@fchum.org)

### HEALTH EQUIPMENT LOAN PROGRAM (HELP)

Health equipment (wheel chairs, walkers, shower stools, elevated and portable toilets, canes, etc.) is available for loan. For more information call 239-7431. Equipment is stored in space donated by the Fern Creek Space Center.

### FAMILIES IN TRANSITION

Fern Creek/Highview United Ministries serves as a facilitating agency in partnership with the Jefferson County Family Courts System implementing a court ordered program for all couples with children under 18, undergoing divorce, designed to enhance parents sensitivity to the special needs of their children during this transition. Sessions take place at Summit Heights United Methodist Church. For more information call Renee Bryant, 762-0630.

Fern Creek/Highview United Ministries is a not-for-profit 501 C 3 organization and all donations are tax deductible. IFAC is funded in part by Louisville/Jefferson County Metro government. The ADC is funded in part under a contract with KIPDA and the Commonwealth of Kentucky, Cabinet of Health & Family Services with funds from the U.S. Department of Health & Human Services and with funds from Louisville/Jefferson County Metro Government.

### ADULT DAY HEALTH CENTER -

Rev. Ron Loughry, Director

**Autumn is often viewed as a time of ending, but for our Adult Day Center it is a time to celebrate our beginning.**

In October 1990 we opened our doors on St. Bernard's campus to a handful of frail older adults. **On this October 12<sup>th</sup>, 2006 we will celebrate our 16<sup>th</sup> anniversary with an Open House from 3:00 -**

**4:30 pm.** Plan on joining us this afternoon for our annual Blessing ceremony; proclamations; entertainment; fun & food! We will reminisce about our past (We have provided over 320,000 hours of service to well over 200 frail, older adults and their families.), but also dream about our future (Learn about our Building to Serve campaign).

If you ever had a loved one attend our ADC, if you ever worked or volunteered at our ADC, if you support the ADC through giving or collaborative work, if you have never seen our ADC then you should attend the festivities. If you can, give us a call to rsvp but if you forget just show up anyway.

Thank you to everyone who helps us make a difference in people's lives, one day at a time, one life at a time.

To visit or volunteer just call Ron or Nurse Alice at 239-7431 or e-mail at [execdir@fchum.org](mailto:execdir@fchum.org)

# 2005-2006 ANNUAL REPORT

## SERVICES PROVIDED

During the 2005-2006 fiscal year the following services were provided by **IFAC**:

- \*Assisted 2,172 families totaling 6,983 people
- \*Provided food to 1,757 families
- \*Secured utilities for 235 families
- \*Secured medications for 39 families
- \*Secured rent for 39 families
- \*Assisted 95 families with transportation
- \*Provided Thanksgiving baskets to 68 families
- \*Provided Christmas food baskets to 82 families and Christmas gifts to 456 children

During the 2005-2006 fiscal year the following services were provided by **ADC**

- \*20,793 hours of activities & personal care to frail, older adults
- \*438 breakfasts
- \*2,962 nutritional lunches
- \*2,040 hours of nursing services

**HEALTH EQUIPMENT LOAN PROGRAM**  
 16 families were given the use of shower stools, wheelchairs, quad canes and walkers free of charge, for the length of time needed.

### 2005-2006 FINANCIAL SUMMARY

<u>PUBLIC SUPPORT</u>		<u>EXPENSES</u>	
Government /Grants	\$135,965	Program Services	\$297,996
Direct Public	\$ 63,547	Management & General	\$ 6,926
Program Services	\$ 50,912	<b>Total</b>	<b>\$304,922</b>
Special Events	\$ 21,010		
Building to Serve	\$ 45,547		
Other	\$ 9,670	Net Assets	\$21,729
<b>Total</b>	<b>\$326,651</b>		



## **UPCOMING COMMUNITY EVENTS**

- EAGLES MONTHLY CHICKEN DINNERS @ St. Ignatius on Rangeland Rd,**  
Sundays 12:30-5:00: 10/1, 11/5, 12/3, Grant given to benefit the ADC.
- DARE TO CARE – CAREFEST @ Waterfront Amphitheater, Sunday 10/1,**
- ADULT DAY CENTER 16<sup>TH</sup> ANNIVERSARY OPEN HOUSE: Thursday 10/12,**
- HIGHVIEW COMMUNITY FALL FESTIVAL: Saturday, 10/14**
- FERN CREEK COMMUNITY FALL FESTIVAL: Thursday, 10/19**
- BEULAH PRESBYTERIAN CHILI SUPPER & AUCTION: Friday, 10/20**
- FERN CREEK BAPTIST HUNDURAS DINNER & AUCTION, Friday, 10/20**
- SUMMIT HEIGHTS UNITED METHODIST FALL FESTIVAL: Saturday 10/21**
- 1<sup>ST</sup> CAPITAL BANK HALLOWEEN FEST: Tuesday, 10/24**
- JAMES O. LEACH 8<sup>th</sup> ANNUAL HUNGER AWARENESS DINNER @ St. Bernard,**  
Saturday 11/4, 7:00 pm
- KIC 28<sup>TH</sup> ANNUAL COMMUNITY HUNGER WALK**  
@ Festival Plaza – Downtown Waterfront, Sunday, 11/5, registration @ 1:00 pm start @ 2:00 pm
- JEFFERSON MALL’S TIME OF GIVING SHOPPING: Sunday, 11/12**
- FERN CREEK/HIGHVIEW MINISTERIAL ASSOCIATION ANNUAL COMMUNITY THANKSGIVING SERVICE**  
@ Fern Creek Baptist Tuesday, 11/21 @ 7:30 pm
- HIGHVIEW HOLIDAY FEST: Friday evening 12/8**
- LIGHT UP FERN CREEK: Saturday 12/9 from 4:30-6:00 pm followed by**
- FCHUM ANNUAL CHRISTMAS BENEFIT CONCERT @ Fern Creek Christian**

YOU ARE CORDIALLY INVITED TO THE

**16<sup>TH</sup> ANNIVERSARY CELEBRATION  
OPEN HOUSE**

OF THE

**FERN CREEK/HIGHVIEW  
UNITED MINISTRIES  
*ADULT DAY CENTER***

THURSDAY, OCTOBER 12, 2006  
(3:00-4:30 pm)  
(ceremonies at 3:30)

7502 TANGELO DRIVE  
(located on St. Bernard's campus)

RSVP REQUESTED, BUT NOT NECESSARY  
FOR MORE INFORMATION CALL  
REV. RON LOUGHRY AT 239-7431

**Refreshments courtesy of the**

**Fern Creek & Mt. Washington DADA JOHN'S  
& THE FERN CREEK WOMEN'S CLUB**



Throughout the year, Fern Creek/Highview United Ministries helps families whom are in crisis. For many of these individuals who are struggling to provide the basic necessities of life, the holidays can be particularly stressful. In order to help families in our community, Fern Creek/Highview United Ministries will once again be conducting our

## Holiday Cheer Program 2006.

**We need families, groups, or organizations who are willing to adopt a family and/or sponsor food baskets! Please contact Renee or Jana at 762-0630, the Individual & Family Assistance Center office as soon as possible if you can assist with this ministry.**

### Holiday Meal Items

Stuffing Mix  
1-10 lb. bag of potatoes  
1-5 lb. bag of onions  
2 cans of cranberry sauce  
1 package of dinner rolls  
3 to 5 cans of green vegetables  
3 to 5 cans of mixed vegetables  
1 to 2 cans of pie filling  
1 bag of flour and 1 bag of sugar  
\$15-\$20 gift certificate  
to buy meat/perishable items

### Suggested Christmas Buying Guidelines

- A. 1 to 2 outfits per child (not to exceed two)  
*Example: 1 pair of pants (jeans, etc.) or skirt  
1 shirt or sweater & socks and undergarments*  
Please note if a child has a special need!
- B. 1 to 2 age appropriate gifts per child  
*Example: toy, game, or enjoyment item*
- C. (Optional) A gift for parent

**Due to space restrictions at our office all items must be delivered to Fern Creek Baptist Church Gym at 5920 Bardstown Rd. on November 13<sup>th</sup> for Thanksgiving and December 11<sup>th</sup> for Christmas! Someone will be there between 8am -6pm to accept all deliveries.**

**It is extremely important that all items be delivered on the appropriate day!**

## **OPPORTUNITIES TO HELP:**

### **\*\*PLEDGE TO OUR BUILDING TO SERVE CAMPAIGN\*\***

Use our Thornton Fund Cards...Use our Kroger Gift Cards  
or purchase Valu Market Certificates from our office

...Designate donations to Goodwill to benefit our IFAC office...

Designate FCHUM in Wills, Bequests, and Memorial Gifts

...G.E. Employees participate in our Matching Funds program...

Recycle computer ink cartridges \*\*\*\*\* Respond to Wish Lists

Support special events like our Annual GALA, Benefit Concerts, & Golf Scramble.

Most importantly keep Fern Creek Highview United Ministries in your  
prayers!!!

**FOR MORE INFORMATION CALL OUR OFFICE 239-7407  
OR VISIT OUR WEBSITE AT FCHUM.ORG**

### **G. E. MATCHING FUNDS**

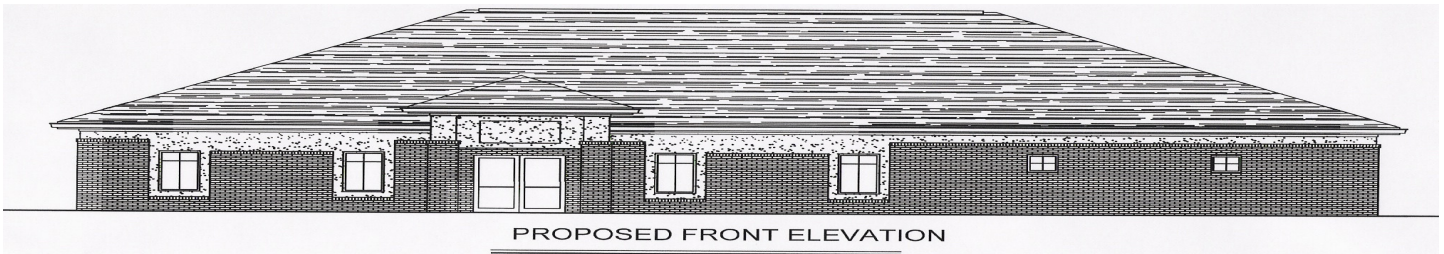
Calling all G.E. employees, retirees, and families! If you qualify for this program your dollars can be doubled! Your donation of \$25 or more will be matched by G.E. You must call 1-800-305-0669 or go to [www.gefoundation.com](http://www.gefoundation.com) and click on "matching gift program" and follow prompts to register. Help us contact other G.E. people and enlarge our G.E. Circle of Friends. Think of all the folks in our area who have connections to G.E. Especially as we build our new FACILITY this could make a tremendous difference.

**COOKBOOKS:** We still have some COOKBOOKS available. Just \$10 !!! Almost 500 recipes in an attractive hardback, 3 ring vinyl binder. The best recipes from all the best church cooks! Great gift ideas for birthdays, weddings, graduations, housewarmings, and collectors!

## **2006-2007 LOUISVILLE METRO GOVERNMENT FUNDING SUPPORT**

During this new fiscal year FCHUM is scheduled to receive \$25,000 in Metro funds for our IFAC program, \$5,000 for our Adult Day Center services, and the second \$15,000 installment in a \$30,000 pledge from our three councilmen (*Thanks Robin Engel, James Peden, & Stuart Benson*) toward our Building to Serve project. As we venture into the new fiscal year, there possibilities of extra building funds from Metro as well. The lunches provided at our Adult Day Center are also made possible through the **Metro Nutrition Program** Our councilpeople, Mayor Jerry Abramson, & the Metro Dept. of Human Services recognize the great value of our work and our integrity in providing services. Please be sure to acknowledge this help to our officials whenever possible and to encourage continued support.

# BUILDING TO SERVE

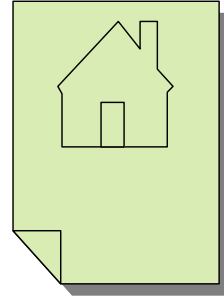


## Cost

\$350,000.00 initial phase with future development as needed.

## Funding

- Capital Campaign to raise \$350,000.00
- Blessed with start up seed funds of \$50,000
- Over \$50,000 cash donations received as of July 2006
- Additional pledges committed
- \$50,000.00 in-kind gifts and services already committed
- Church, Civic, Business, Government, and Community Partnerships Possibilities
- Naming Opportunities available for Food Pantry, Conference Room, Service Areas
- Memory and In Honor Bricks



## The Capital Campaign: What It Will Take

1 gift at...	\$250,000
4 gifts at...	\$50,000
10 gifts at...	\$ 25,000
25 gifts at...	\$ 10,000
50 gifts at...	\$ 5,000
100 gifts at...	\$ 2,500
250 gifts at...	\$ 1,000
500 gifts at...	\$ 500
1,000 gifts at...	\$ 100



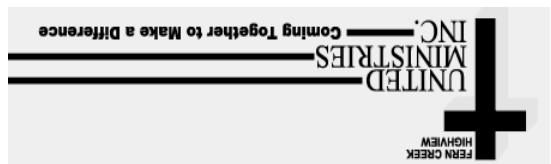
And many more of varying amounts, all important to our cause...

Contributions may be sent to Fern Creek/Highview United Ministries, "Building to Serve" Capital Campaign, 7502 Tangelo Drive, Louisville, KY 40228. For more information call (502) 239-7407

**Fern Creek/Highview United Ministries** is a not-for-profit 501 C 3 organization and all donations are tax deductible. IFAC is funded in part by Louisville/Jefferson County Metro government. The ADC is funded in part under a contract with KIPDA and the Commonwealth of Kentucky, Cabinet of Health & Family Services with funds from the U.S. Department of Health & Human Services and with funds from Louisville/Jefferson County Metro Government.

**MARK YOUR CALENDARS FOR  
NEXT YEAR'S GALA: MAY 12, 2007**

**Fern Creek Highview United Ministries, Inc.**  
7502 Tangelo Drive  
Louisville, KY 40228



**NON PROFIT ORG**  
UNITED STATES  
POSTAGE PAID  
LOUISVILLE, KY.  
40228  
PERMIT #0593