



FERN CREEK/HIGHVIEW UNITED MINISTRIES NEWS

Volume 8
Issue 3

HOLIDAY
2006

7502 Tangelo Drive, Louisville, KY 40228 / Central Office: (502) 239-7407, Fax: (502) 239-7454

MEMBER CHURCHES

Beulah Presbyterian
Cedar Creek Baptist
Fern Creek Baptist
Fern Creek Christian
Fern Creek United Methodist
Good Shepherd
Highview Baptist
Lighthouse Christian Center
Louisville Chinese Christian
New Vision Ministry Center
St. Alban's Episcopal
St. Bernard Catholic
St. Gabriel Catholic
St. Stephen C.E.C.
St. Stephen Lutheran
Seaton Park Baptist
Solid Rock Church of God
Summit Heights United
Methodist
Trinity World Outreach
Center
and the
Fern Creek/Highview
Ministerial Association

**VISIT OUR WEBSITE
FCHUM.ORG**

BUILDING TO SERVE AT CHRISTMASTIME

Do you remember the song *"All I want for Christmas is my two front teeth"* or how about *"I'm dreaming of a white Christmas"*? Many of our volunteers and staff are singing different tunes this Christmas season – *"All I want for Christmas is our new facility"* or *"I'm dreaming of bulldozers"*. And through God's blessings and the hard work of many donors and volunteers those wishes are closer to coming true. Our civil engineers are saying that we should be able to have the bulldozers out working sometime in December (weather permitting).

It has long been my prayer that the work of Fern Creek/Highview United Ministries not be needed. That all those children who are hungry, or need help with school supplies, or wouldn't have Christmas presents would all have their needs met. That all the families' struggling to get through a crisis wouldn't have to worry about how to take care of their family's most basic needs. Or that older adult wouldn't be faced with choosing between paying for medicine or paying for bread. I've longed prayed that the frail older adults of our community and their caregivers would have all the resources necessary to care for their needs. But as long as these needs face our community then I give thanks that Fern Creek/Highview United Ministries does exist. God has given us the opportunity to minister to others in Christ's name. Our new facility, with more space for both our Individual & Family Assistance Center and the Adult Day Center will enable us to more effectively deliver services to those in need. Our new facility will set Fern Creek/Highview United Ministries as a beacon on a hill – a lighthouse if you will- shining through the darkness of despair and the fog of need. Christ told us that "we are the light of the world." Especially at this holy Christmas season I want to say thank you to all the supporters who make it possible for Fern Creek/Highview United Ministries to make a positive difference in the lives of the thousands of people we help every year.

*God's Peace & Blessings,
Rev. Ron Loughry*

2006 Light Up Fern Creek & Highview Holiday Fest

The 2nd annual Highview Holiday Fest will take place Friday Evening, Dec. 8th along Fegenbush Rd in the heart of Highview.

The 8th annual Light Up Fern Creek celebration takes place Saturday, Dec. 9th at the Fern Creek Fire Station #1 and the Benefit Christmas concert will take place that evening at Fern Creek Christian Church.

See inside for details!

Fern Creek/ Highview United Ministries Programs

INDIVIDUAL & FAMILY ASSISTANCE CENTER -

Renee Bryant, MSW,
Director

"The Spirit of the Lord is upon me ...to bring good news to the afflicted..." (Isaiah 61)

Please look at the **Holiday Cheer** information in this issue to find out how you can help us "bring good news" to our neighbors in need..

As you read this our Holiday Cheer program is in full swing. Thank you to all who are providing

Thanksgiving food baskets and to all those who are adopting families at Christmas.

If you have not registered to provide assistance to a specific family there is still time and means to lend a hand. Each year we have families that were not adopted who come and visit our "Santa Shoppe". We can still use donations of toys and personal items. Just call our office for suggestions and guidelines.

And there is never a season that food is not needed. We have been assisting record numbers of people, many of whom have never sought assistance before. With what the winter holds for heating, food, and fuel costs we know many more families will be pushed over the edge into financial crisis in the months ahead.

Please call Renee or Jana at 762-0630 or e-mail at ifacdir@fchum.org for more information.

HEALTH EQUIPMENT LOAN PROGRAM (HELP)

Health equipment (wheel chairs, walkers, shower stools, elevated and portable toilets, canes, etc.) is available for loan. For more information call 239-7431. Equipment is stored in space donated by the Fern Creek Space Center.

FAMILIES IN TRANSITION

Fern Creek/Highview United Ministries serves as a facilitating agency in partnership with the Jefferson County Family Courts System implementing a court ordered program for all couples with children under 18, undergoing divorce, designed to enhance parents sensitivity to the special needs of their children during this transition. Sessions take place at Summit Heights United Methodist Church. For more information call Renee Bryant, 762-0630.

Fern Creek/Highview United Ministries is a not-for-profit 501 C 3 organization and all donations are tax deductible. IFAC is funded in part by Louisville/Jefferson County Metro government. The ADC is funded in part under a contract with KIPDA and the Commonwealth of Kentucky, Cabinet of Health & Family Services with funds from the U.S. Department of Health & Human Services and with funds from Louisville/Jefferson County Metro Government.

COOKBOOKS: We still have some **COOKBOOKS** available. Almost 500 recipes in an attractive hardback, 3 ring vinyl binder. The best recipes from all the best church cooks! Great gift ideas for birthdays, weddings, graduations, housewarmings, and collectors! Originally \$10 each they are now selling for 2 for \$10!!!

ADULT DAY HEALTH CENTER -

Rev. Ron Loughry, Director

"Thus says the Lord...be glad and rejoice...for behold...no longer will there be ...an old man [or woman] who does not live out his [or her] days...they shall not labor in vain...". This passage from the 65th chapter of Isaiah which leads to the familiar Christmas imagery of the lion lying down with the lamb and peace on earth reminds us of God's concern for our older adults. Most of the participants who attend our ADC would be regulated to premature nursing home placement if it weren't for our services. Our nurse and activity staff and our many wonderful volunteers provide an opportunity for families to keep their loved one with them in the home and provides not only respite for the weary but also socialization, stimulation, and much need personal care for the older adult. With comforting words and caring contact our staff and volunteers bring not only greater quantity of life but also greater quality of life for these older children of God.

Thank you to everyone who helps us make a difference in people's lives, one day at a time, one life at a time.

To visit or volunteer just call Ron or Nurse Alice at 239-7431 or e-mail at exedir@fchum.org

UPCOMING COMMUNITY EVENTS

Tuesday, November 21

Fern Creek/Highview Ministerial Association's Annual Community Thanksgiving Service @ Fern Creek Baptist, 7:30 pm

Thursday & Friday, November 23 & 24

FCHUM closed for holiday

EAGLES MONTHLY CHICKEN DINNERS @ St. Ignatius on Rangeland Rd,
Sundays 12:30-5:00: 12/3, 1/7, 2/4, 3/6, Grant given to benefit the ADC.

Friday, December 8

Highview Holiday Fest

Saturday December 9

Light Up Fern Creek & Christmas Benefit Concert

December 23 through January 1

All FCHUM programs & offices closed for the holiday

2006-2007 LOUISVILLE METRO GOVERNMENT FUNDING SUPPORT

During this new fiscal year FCHUM is scheduled to receive \$25,000 in Metro funds for our IFAC program, \$5,000 for our Adult Day Center services, and the second \$15,000 installment in a \$30,000 pledge from our three councilmen (*Thanks Robin Engel, James Peden, & Stuart Benson*) toward our Building to Serve project. As we venture into the new fiscal year, there possibilities of extra building funds from Metro as well. The lunches provided at our Adult Day Center are also made possible through the **Metro Nutrition Program** Our councilpeople, Mayor Jerry Abramson, & the Metro Dept. of Human Services recognize the great value of our work and our integrity in providing services. Please be sure to acknowledge this help to our officials whenever possible and to encourage continued support.

OPPORTUNITIES TO HELP: Respond to Wish Lists...Use our Thornton Fund Cards...Use our Kroger Gift Cards or purchase Valu Market Certificates from our office...Designate donations to Goodwill to benefit our IFAC office...Designate FCHUM in Wills, Bequests, and Memorials...G.E. Employees participate in our Matching Funds program...Recycle computer ink cartridges...Support and Attend special events like our Annual GALA, picnics, festivals, and benefit concerts.

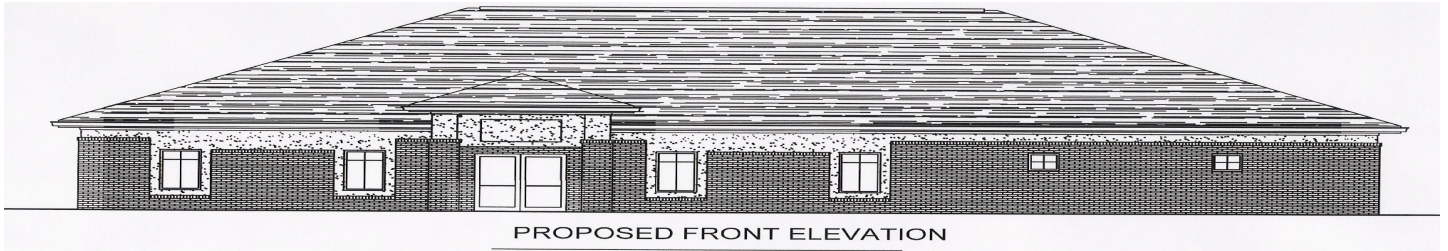
**And most importantly keep Fern Creek Highview United Ministries
in your prayers!!!**

**FOR MORE INFORMATION CALL OUR
OFFICE 239-7407
OR VISIT OUR WEBSITE AT FCHUM.ORG**

G. E. MATCHING FUNDS

Calling all G.E. employees, retirees, and families! If you qualify for this program your dollars can be doubled! Your donation of \$25 or more will be matched by G.E. You must call 1-800-305-0669 or go to www.gefoundation.com and click on “matching gift program” and follow prompts to register. Help us contact other G.E. people and enlarge our G.E. Circle of Friends. Think of all the folks in our area who have connections to G.E. Especially as we build our new FACILITY this could make a tremendous difference.

BUILDING TO SERVE

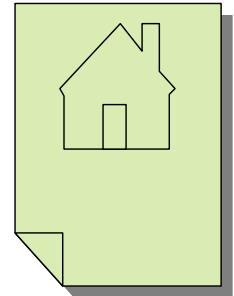


Cost

\$400,000.00 with future development as needed.

Funding

- Capital Campaign to raise \$350,000.00
- Over \$100,000 cash donations & seed money received in less than a year!
- Additional pledges committed
- \$100,000.00 in-kind gifts and services already committed
- Church, Civic, Business, Government, and Community Partnerships
- Naming Opportunities available for Food Pantry, Conference Room, Service Areas
- Memory and In Honor Bricks



The Capital Campaign: What It Will Take

1 gift at...	\$400,000
4 gifts at...	\$100,000
8 gifts at...	\$ 50,000
16 gifts at...	\$ 25,000
40 gifts at...	\$ 10,000
80 gifts at...	\$ 5,000
160 gifts at...	\$ 2,500
400 gifts at...	\$ 1,000



And many more of varying amounts, all important to our cause...

Contributions may be sent to Fern Creek/Highview United Ministries, “Building to Serve” Capital Campaign, 7502 Tangelo Drive, Louisville, KY 40228. For more information call (502) 239-74

CHARITABLE GIVING

How much stuff do we really need? Instead of exchanging gifts each year more and more people are discovering the joy of making charitable donations in honor or memory of friends and family. Parents are instilling core values when they share with their children the importance of helping others. Some families place a white envelope on their Christmas tree that holds a check for a treasured charity.

As you wrap up your taxes and business ventures for 2006 perhaps you will do some estate planning or update your will. As you attend to these affairs please consider giving to FCHUM. What an important legacy we can leave when we let friends and family know that our charities were so important that we left them a portion of our estate.

MARK YOUR CALENDARS FOR NEXT YEAR'S PENNIES FROM HEAVEN GALA: MAY 12, 2007

Fern Creek Highview United Ministries, Inc.
7502 Tangelo Drive
Louisville, KY 40228

NON PROFIT ORG
UNITED STATES
POSTAGE PAID
LOUISVILLE, KY.
40228
PERMIT #0593

