

7502 Tangelo Drive, Louisville, KY 40228 / Central Office: (502) 239-7407, Fax: (502) 239-7454

MEMBER CHURCHES

Beulah Presbyterian
Cedar Creek Baptist
Fern Creek Baptist
Fern Creek Christian
Fern Creek United Methodist
Good Shepherd
Highview Baptist
Lighthouse Christian Center
Louisville Chinese Christian
New Vision Ministry Center
St. Alban's Episcopal
St. Bernard Catholic
St. Gabriel Catholic
St. Stephen C.E.C.
St. Stephen Lutheran
Seaton Park Baptist
Solid Rock Church of God
Summit Heights United
Methodist
Trinity World Outreach
Center
and the
Fern Creek/Highview
Ministerial Association

**VISIT OUR WEBSITE
FCHUM.ORG**

BUILDING TO SERVE

Now is the time, now is the need.



On a beautiful Spring day in April FCHUM celebrated a benchmark event in its 18 years of service to our community when volunteers, staff, ministers, and other civic and community leaders joined to break ground on our new facility that will be located on the property of Beulah Presbyterian Church. Among the many who dug in that day with shovels were Rev. Ron Loughry, FCHUM Executive Director, Renee Bryant, MSSW, FCHUM IFAC Director and Councilmen James Peden, Stuart Benson, and Robin Engel. Later in the Spring our councilmen presented a check for \$15,000 as a first installment of their financial commitment to our campaign. Among several of our churches that have made special donations, most recently Cedar Creek Baptist surpassed their initial Hallelujah goal and collected over \$12,000 for our Building Campaign. We are hoping to see bulldozers working very soon now!

**SUMMER BENEFIT CONCERT
BACK TO SCHOOL SUPPLIES
2006 GALA RECAP
BUILDING TO SERVE**

See inside for more information!

Fern Creek/ Highview United Ministries Programs

INDIVIDUAL & FAMILY ASSISTANCE CENTER -

Renee Bryant, MSW, Director

"Summertime and the living is easy" – a phrase from a popular song projects what is a false image for many families. With children home and not receiving breakfast and lunch assistance at school many families find it hard to stretch already limited resources.

Our food pantry is busier than ever. Just in the first three days of July we assisted 40 families!

In the past fiscal year we assisted 2,172 families.

And while children are enjoying their summer break it is time for us to collect items for our back to school *Through the grace of God strangers become family!*

Please call Renee or Jana at 762-0630 or e-mail at ifacdir@fchum.org for more information.

FCHUM IFAC ASSISTANT & DEVELOPMENT COORDINATOR

We would like to announce that beginning with July, Jana Pedowitz has joined our ministry team. While working part-time in our IFAC program, Jana will also coordinate development activities in grant funding and management, program development and fund-raising. Jana is a recent MSSW graduate of the U of L Kent School of Social Work.

ADULT DAY HEALTH CENTER –

Rev. Ron Loughry, Director

"In the good old summertime...strolling down a shady lane...with my darling mine." Familiar lyrics to our frail older participants, but for many of them their "good old" years are not what they had envisioned. Physical frailties or dementia-related illnesses like Alzheimer's disease have shattered those golden dreams. They and their families face tremendous challenges just in dealing with basic daily living activities.

A husband died, the wife needed daily care. The family arranged for her to attend our ADC. The day before she was to begin, just one month after her husband's death, she died. Later the son came to talk. He worked for a supply company, had noticed the items on our "Wish List," and had decided to provide new towel and soap dispensers, plus all the paper products, soaps, and cleaners we used. He knew the value of our work and even though his mother wasn't able to attend he still wanted to help us help others. We are blessed with the opportunity to help.

Thank you to everyone who helps us make a difference in people's lives, one day at a time, one life at a time.

To visit or volunteer just call Ron or Nurse Alice at 239-7431 or e-mail at execdir@fchum.org

HEALTH EQUIPMENT LOAN PROGRAM (HELP)

Health equipment (wheel chairs, walkers, shower stools, elevated and portable toilets, canes, etc.) is available for loan. For more information call 239-7431. Equipment is stored in space donated by the Fern Creek Space Center.

FAMILIES IN TRANSITION

Fern Creek/Highview United Ministries serves as a facilitating agency in partnership with the Jefferson County Family Courts System implementing a court ordered program for all couples with children under 18, undergoing divorce, designed to enhance parents sensitivity to the special needs of their children during this transition. Sessions take place at Summit Heights United Methodist Church. For more information call Renee Bryant, 762-0630.

Fern Creek/Highview United Ministries is a not-for-profit 501 C 3 organization and all donations are tax deductible. IFAC is funded in part by Louisville/Jefferson County Metro government. The ADC is funded in part under a contract with KIPDA and the Commonwealth of Kentucky, Cabinet of Health & Family Services with funds from the U.S. Department of Health & Human Services and with funds from Louisville/Jefferson County Metro Government.

2006 "PENNIES FROM HEAVEN" GALA REPORT

A grand success!

We met our goal of \$15,000 and even better yet, thanks to our wonderful sponsors we had less than 2% expenses!

We want to give special acknowledgement to Doug Wolz of the Cedar Springs **Kroger** for supplying the pork tenderloin for the meal, **Ryan's** restaurants for supplying potatoes and rolls, **KFC** for the corn, **SAM's** for the green beans, & **Atria Assisted Living** for the salad and cake! **A special thanks to Mike Sinkhorn and volunteers for preparing & serving!**

GALA SPONSORS

Platinum: Red Bud Hill Development

Gold: Dignity Memorial

Silver: Franciscan Health Care Center, Ron & Evelyn Vaughn,
Diane & Eloise Rhodes

Copper: Sharon Pfau, Air Hydro Power, David & Inez White,
Stickler & Associates

Supporter: Fern Creek Women's Club, Louise Tobbe, Catherine Lechletier

Friend: Assurance Home Care, Jenny Solomon, Lenora Rogers, Phyllis Craig

THANKS FOR YOUR SUPPORT!

MARK YOUR CALENDARS FOR NEXT YEAR'S GALA: MAY 12, 2007

OPPORTUNITIES TO HELP: Respond to Wish Lists...Use our Thornton Fund Cards...Use our Kroger Gift Cards or purchase Valu Market Certificates from our office...Designate donations to Goodwill to benefit our IFAC office...Designate FCHUM in Wills, Bequests, and Memorials...G.E. Employees participate in our Matching Funds program...Recycle computer ink cartridges...Support and Attend special events like our Annual GALA, picnics, festivals, and benefit concerts. And most importantly keep Fern Creek Highview United Ministries in your prayers!!!

**FOR MORE INFORMATION CALL OUR OFFICE 239-7407
OR VISIT OUR WEBSITE AT FCHUM.ORG**

2005-2006 LOUISVILLE METRO GOVERNMENT FUNDING SUPPORT

During this past fiscal year FCHUM received \$30,000 in Metro funds for our IFAC program, \$5,000 for our Adult Day Center services, and \$15,000 in a \$30,000 pledge from our three councilmen

(Thanks Robin Engel, James Peden, & Stuart Benson)

toward our Building to Serve project. We will receive similar levels of support as we venture into the new fiscal year, with the possibilities of extra building funds as well. Our councilpeople, Mayor Jerry Abramson, & the Metro Dept. of Human Services recognize the great value of our work and our integrity in providing services. Please be sure to acknowledge this help to our officials whenever possible and to encourage continued support.

Grants & Donations:

BUILDING TO SERVE = \$15,000 Toward our Building to Serve campaign from our 3 council people - James Peden, Stuart Benson, & Robin Engel. * In memory of Ron Loughry's father Howard Loughry -\$341 * In honor of Rev. Lester & Irene Gross' 60th Anniversary - \$1,500 * Ratterman & Sons \$1,000 * Norm & Sue Hatter in honor of Eleanor Young \$1,000 * Robert Shelley in Memory of Katherine \$1,000 *

OTHER GIFTS:

Order of Eastern Star Purity Chapter -\$1,000 to ADC *

Fairview Homemakers - \$1,067.10 *

Fern Creek/Highview Ministerial Association Spring Choir Festival - \$819

Beulah Presbyterian Souper Bowl of Caring - \$413

MEMORIAL GIFTS: Charlie McCubbins, Marie Varner, Kay Roalofs

G. E. MATCHING FUNDS

Calling all G.E. employees, retirees, and families! If you qualify for this program your dollars can be doubled! Your donation of \$25 or more will be matched by G.E. You must call 1-800-305-0669 or go to www.gefoundation.com and click on "matching gift program" and follow prompts to register.

Help us contact other G.E. people and enlarge our G.E. Circle of Friends. Think of all the folks in our area who have connections to G.E. Especially as we build our new FACILITY this could make a tremendous difference.

**SUMMER BENEFIT
CONCERT
SUNDAY, AUGUST 13,
2006**



6:00 P.M.



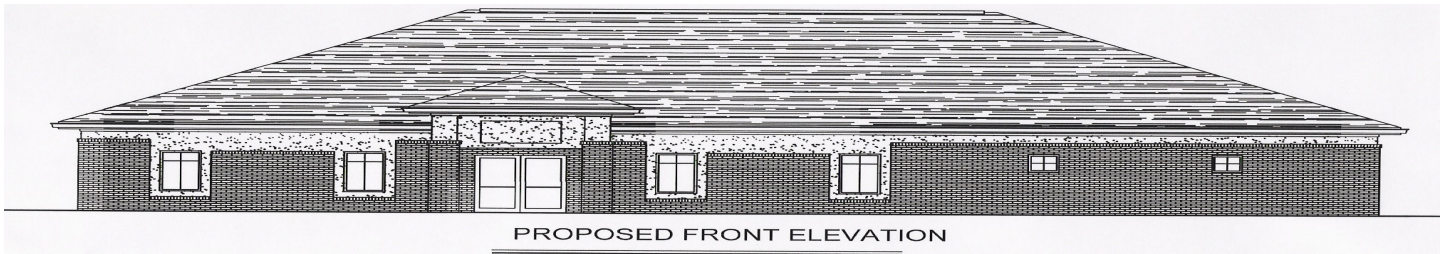
GLORYBOUND & FRIENDS

IN CONCERT TO BENEFIT
FERN CREEK/HIGHVIEW UNITED MINISTRIES

AT SUMMIT HEIGHTS UNITED METHODIST
7400 OUTER LOOP

A special offering will be collected – all proceeds to FCHUM!
For more information call 239-7407

BUILDING TO SERVE

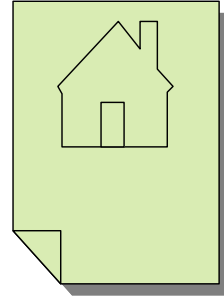


Cost

\$350,000.00 initial phase with future development as needed.

Funding

- Capital Campaign to raise \$300,000.00
- Over \$50,000 cash donations received as of July 2006
- Additional pledges committed
- \$50,000.00 in-kind gifts and services already committed
- Church, Civic, Business, Government, and Community Partnerships
- Naming Opportunities available for Food Pantry, Conference Room, Service Areas
- Memory and In Honor Bricks



The Capital Campaign: What It Will Take

1 gift at...	\$25,000
4 gifts at...	\$10,000
8 gifts at...	\$ 5,000
16 gifts at...	\$ 2,000
32 gifts at...	\$ 1,000
48 gifts at...	\$ 750
64 gifts at...	\$ 500
128 gifts at...	\$ 250
200 gifts at...	\$ 100



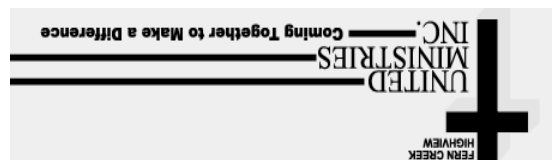
And many more of varying amounts, all important to our cause...

Contributions may be sent to Fern Creek/Highview United Ministries, "Building to Serve" Capital Campaign, 7502 Tangelo Drive, Louisville, KY 40228. For more information call (502) 239-7407

Fern Creek/Highview United Ministries is a not-for-profit 501 C 3 organization and all donations are tax deductible. IFAC is funded in part by Louisville/Jefferson County Metro government. The ADC is funded in part under a contract with KIPDA and the Commonwealth of Kentucky, Cabinet of Health & Family Services with funds from the U.S. Department of Health & Human Services and with funds from Louisville/Jefferson County Metro Government.

COOKBOOKS: We still have some COOKBOOKS available. Just \$10 !!! Almost 500 recipes in an attractive hardback, 3 ring vinyl binder. The best recipes from all the best church cooks! Great gift ideas for birthdays, weddings, graduations, housewarmings, and collectors!

Fern Creek Highview United Ministries, Inc.
7502 Tangelo Drive
Louisville, KY 40228



NON PROFIT ORG
UNITED STATES
POSTAGE PAID
LOUISVILLE, KY.
40228
PERMIT #0593

