

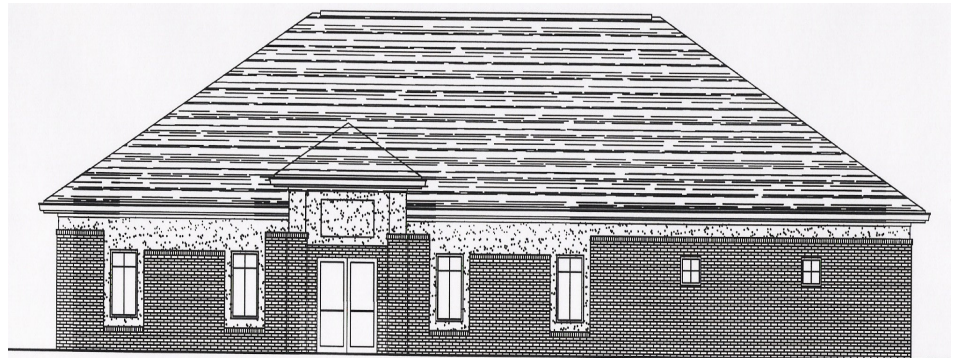
7502 Tangelo Drive, Louisville, KY 40228 / Central Office: (502) 239-7407, Fax: (502) 239-7454

MEMBER CHURCHES

Beulah Presbyterian
Cedar Creek Baptist
Fern Creek Baptist
Fern Creek Christian
Fern Creek United Methodist
Good Shepherd
Highview Baptist
Lighthouse Christian Center
Louisville Chinese Christian
New Vision Ministry Center
St. Alban's Episcopal
St. Bernard Catholic
St. Gabriel Catholic
St. Stephen C.E.C.
St. Stephen Lutheran
Seaton Park Baptist
Solid Rock Church of God
Summit Heights United
Methodist
Trinity World Outreach
Center
and the
Fern Creek/Highview
Ministerial Association

**VISIT OUR WEBSITE
FCHUM.ORG**

BUILDING TO SERVE



PROPOSED FRONT ELEVATION

Eleanor Young has been volunteering at FCHUM's Assistance Center since our beginnings back in 1988. She has worked in all kinds of accommodations, a room at Fern Creek Baptist, borrowed space at the old Goodwill location, and cramped quarters at the Fern Creek Community Center. Always she has had a vision, a dream that one day our Assistance Center would have its own facilities, adequate space to help those in our community who need a helping hand. Eleanor is still faithful in her volunteering and in her dream, and thanks to her church Beulah Presbyterian, many other resources, and donations her dream is soon to take roots.

The drawing above is a rough sketch of our first architectural plan, our volunteer General Contractor Bob Beard, a member of Cedar Creek Baptist, is energetically working on details like permits and construction related items. Ed Dries, a member of ST. Bernard, our Task Force leader is gathering people to assist in obtaining funding, volunteering services and the overall facilitation of the project. Recognizing the key role our Assistance Center plays in our community, Metro Councilman Robin Engel has stepped forward to play a vital role in this project; Councilmen James Peden and Stuart Benson are also lending support. Our churches will be providing extra financial support while keeping up their regular ongoing budget support, and we will be seeking grants from various sources as well, but we also need you – all of our faithful supporters and those of you, who for whatever reason have never made a donation. Our estimate for the cost of the project is about \$325,000. For this blessing to happen we need your help. Just in individual donations we have raised \$3,335 in only a month!

Now is the time, now is the need.

Fern Creek/ Highview United Ministries Programs

INDIVIDUAL & FAMILY ASSISTANCE CENTER -

Renee Bryant, MSW, Director

I want to thank everyone for all the generous gifts of food, toys, baby items, and money this holiday season. This year 456 children received gifts, 82 families received Christmas food baskets and 68 families were provided Thanksgiving baskets.

There are so many stories of gratitude I could tell, let me share just one. A single mom with two children stopped in, her daughter was three and her son was fourteen. The daughter loves Disney Princesses. We just happened to have a Disney Princess doll and tea set. We also were able to provide age appropriate items for the son (it is often harder to have gifts for teenagers but due to your generosity we did). The mother became teary when she saw the gifts provided, she whispered, "There are Christmas angels out there." When I explained how we were able to provide the Christmas gifts (through the generosity of individuals and groups) she cried even more thinking about the selflessness of others that would make such a difference to an unknown family.

Through the grace of God strangers become family!

Please call Renee or Alice at 762-0630 or e-mail at ifacdir@fchum.org for more information.

ADULT DAY HEALTH CENTER -

Rev. Ron Loughry, Director

Happy New Year!

For many of our participants the New Year holds memories of Guy Lombardo and "Auld Lang Syne". But that endearment of should old acquaintances be forgot is also a bittersweet reality for many of them and their families as dementia robs them of memories.

That is where the blessing of the Adult Day Center is most clearly manifest. Through our care, structured activities and special programs both the participant and their family are cradled in the arms of a larger family of caring. Our ADC is blessed with extraordinarily caring and competent staff whose work is complimented by the efforts of dozens of dedicated compassionate volunteers. We are blessed by support from our churches, from civic groups, and many individuals. Our local government also contributes through funds to provide a hot nutritious lunch and special entertainment programs (the Mayor's Winterscene and Summerscene shows-to-go) and staff support.

Thank you to all for sharing a "cup of kindness for auld lang syne".

To visit or volunteer just call Ron or Nurse Alice at 239-7431 or e-mail at execdir@fchum.org

HEALTH EQUIPMENT LOAN PROGRAM (HELP)

Health equipment (wheel chairs, walkers, shower stools, elevated and portable toilets, canes, etc.) is available for loan. For more information call 239-7431. Equipment is stored in space donated by the Fern Creek Space Center.

FAMILIES IN TRANSITION

Fern Creek/Highview United Ministries serves as a facilitating agency in partnership with the Jefferson County Family Courts System implementing a court ordered program for all couples with children under 18, undergoing divorce, designed to enhance parents sensitivity to the special needs of their children during this transition. Sessions take place at Summit Heights United Methodist Church. For more information call Renee Bryant, 762-0630.

Fern Creek/Highview United Ministries is a not-for-profit 501 C 3 organization and all donations are tax deductible. IFAC is funded in part by Louisville/Jefferson County Metro government. The ADC is funded in part under a contract with KIPDA and the Commonwealth of Kentucky, Cabinet of Health & Family Services with funds from the U.S. Department of Health & Human Services and with funds from Louisville/Jefferson County Metro Government.

WISH LISTS

IFAC: FLOUR, SUGAR, CEREAL,
DISH WASHING LIQUID, TOOTH
PASTE, & SHAMPOO

Call Renee or Alice at 762-0630.

ADC: NAPKINS, BLEACH,
PAPER TOWELS,
100% FRUITJUICES

Call Ron at 239-7431

MATCHING FUNDS FOR ENERGY ASSISTANCE

For every dollar given to FCHUM by an individual and designated "energy assistance" or "Metro Match", the Louisville Metro government will match up to \$7,000. Then L G & E will match that amount. Therefore if we can raise \$7,000 by March 31st, we could have \$28,000 available to provide heating assistance. All funds remain in our community, will be administered by FCHUM and all donations are tax deductible.

We have already raised over \$4,000!

G. E. MATCHING FUNDS

Calling all G.E. employees, retirees, and families! If you qualify for this program your dollars can be doubled! Your donation of \$25 or more will be matched by G.E. You must call 1-800-305-0669 or go to www.gefoundation.com and click on "matching gift program" and follow prompts to register.

Help us contact other G.E. people and enlarge our G.E. Circle of Friends. Think of all the folks in our area who have connections to G.E. Especially as we build our new Assistance Center this could make a tremendous difference.

2005-2006 LOUISVILLE METRO GOVERNMENT FUNDING SUPPORT

Fern Creek Highview United Ministries (FCHUM) continues to be blessed through funding support from our local government. Mayor Jerry Abramson, our Councilpeople (Thank you Robin Engel, James Peden, and Stuart Benson) and the Department of Human Services recognize the value of our work, the efficiency and cost-effectiveness of our operations, and the key role all fifteen area community ministries play in caring for people in our community. There have even been occasions that extra funds were directed to community ministries in recognition of our success in filling the gap of human services provision. Please be sure to acknowledge this help to our officials whenever possible and to encourage continued support.

OPPORTUNITIES TO HELP: Respond to Wish Lists...Use our Thornton Fund Cards...Use our Kroger Gift Cards or purchase Valu Market Certificates from our office...Designate donations to Goodwill to benefit our IFAC office...Designate FCHUM in Wills, Bequests, and Memorials...G.E. Employees participate in our Matching Funds program...Recycle computer ink cartridges...Support and Attend special events like our Annual GALA, picnics, festivals, and benefit concerts. And most importantly keep Fern Creek Highview United Ministries in your prayers!!!

**FOR MORE INFORMATION CALL OUR OFFICE 239-7407
OR VISIT OUR WEBSITE AT FCHUM.ORG**

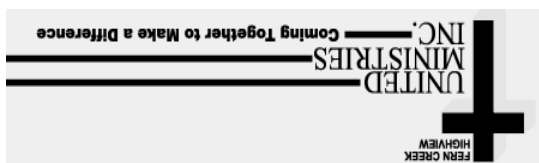
Grants & Donations: Thank you to the following supporters: Eastern Star Purity Chapter; Eagles, A.C.; Catholic Charities; St. Vincent de Paul Societies; Ladies Aux. Knights of Columbus, Assumption Council; Assoc. of Community Ministries; F.C. AARP; St. G. Catholic Golden Agers; Ashley's Chevron; JRF Builders; F.C. Women's Club; F.C. United Methodist Praise Team, all our LOVE LIGHT donors; and all the wonderful individuals who have been so generous during the holiday months. **Special thanks to F.C. Baptist, Beulah Presbyterian, and F.C. Christian for use of space for Holiday Programs.**

MARK YOUR CALENDARS – GALA 2006

Saturday, May 13, 2006 is the date set for our 2006 annual *Pennies from Heaven* Dinner & Auction **GALA**. Set a little later in the Spring this year, this wonderful event takes place the weekend after Derby (Some of you can bring all your earnings from the races and put them to a good cause!) Our event location is once again St. Gabriel's Catholic Church on Bardstown Road, thank you St. Gabriel parish for providing such a fine facility for our use. Look inside for information about tickets, auction item donations and event sponsorships. We also need volunteers to help with various GALA related tasks. Just call our office, 239-7407 to get involved.

COOKBOOKS: We still have some **COOKBOOKS** available. Just \$10 !!! Almost 500 recipes in an attractive hardback, 3 ring vinyl binder. The best recipes from all the best church cooks! Great gift ideas for birthdays, weddings, graduations, housewarmings, and collectors!

Fern Creek Highview United Ministries, Inc.
7502 Tangelo Drive
Louisville, KY 40228



NON PROFIT ORG
UNITED STATES
POSTAGE PAID
LOUISVILLE, KY.
40228
PERMIT #0593

