



# FERN CREEK/HIGHVIEW UNITED MINISTRIES NEWS

Volume 8

Issue 5

SPRING/  
GALA  
2007

7502 Tangelo Drive, Louisville, KY 40228 / Central Office: (502) 239-7407, Fax: (502) 239-7454

## MEMBER CHURCHES

Beulah Presbyterian  
Cedar Creek Baptist  
Fern Creek Baptist  
Fern Creek Christian  
Fern Creek United Methodist  
Good Shepherd  
Highview Baptist  
Lighthouse Christian Center  
Louisville Chinese Christian  
New Vision Ministry Center  
St. Alban's Episcopal  
St. Bernard Catholic  
St. Gabriel Catholic  
St. Stephen C.E.C.  
St. Stephen Lutheran  
Seaton Park Baptist  
Solid Rock Church of God  
Summit Heights United  
Methodist  
Trinity World Outreach  
Center  
and the  
Fern Creek/Highview  
Ministerial Association

**VISIT OUR WEBSITE  
FCHUM.ORG**

## PENNIES FROM HEAVEN

### 2007 GALA AUCTION & DINNER

**SATURDAY, MAY 12<sup>TH</sup> 2007  
6:30 PM, Dinner served 6:45  
ST. GABRIEL CATHOLIC GYM  
5505 Bardstown Road**



**SILENT & LIVE AUCTIONS  
CATERED DINNER  
GLORYBOUND CONCERT**



**Tickets \$20**

**Mystery Bags — Door Prizes  
Annual Penny Contest**

**Call 239-7407 for tickets**

## BUILDING TO SERVE PROGRESS

Have you seen the new "FUTURE HOME" sign? Have you seen the erosion control fencing? Thanks to all those responsible! Permits, plans, and drawings are all in place. The bulldozers and workers should be very visible by printing of this issue. Over \$100,000 has been raised, more has been pledged, in-kind services valued at over \$100,000 are being provided and we are well on our way. Visit our website [FCHUM.ORG](http://FCHUM.ORG) for updates and to find out how you can be a part of this project of blessing!

## **THEME BASKETS**

Contents  
should have a  
value of \$25 or  
more.  
Call 239-7407  
for more  
details.

# **GALA VOLUNTEER OPPORTUNITIES**

## **MYSTERY BAGS**

Contents of bags  
should have a  
value of \$15 or  
more.  
Call 239-7407  
for more  
details.

### **SPONSORSHIPS**

**PLATINUM (\$1,000)**  
**GOLD (\$500)**  
**SILVER (\$250)**  
**COPPER (\$100)**  
**SUPPORTER (\$50)**  
**FRIEND (\$25)**

Call 239-7407 for details,  
Deadline is Friday, May 4, 2007

### **GALA EVENT DAY VOLUNTEER OPPORTUNITIES:**

Set up: 10-12; Decorating: 12-3; Dinner & Auction: 5-9; Clean up: 8:30-10

Please call 239-7407 to volunteer!

**BRING ALL THOSE PENNIES (PREFERABLY ROLLED) HIDING AROUND YOUR HOUSE TO THE  
GALA- PRIZES FOR MOST PENNIES! 772 ROLLS EQUAL A MILE OF PENNIES = \$386**

## **THANK YOU GALA 2007 SPONSORS!**

### **PLATINUM**

**Red Bud Hill Development**  
**Corrigan Electric & Home Systems**  
**Passport Advantage**  
**Bob Hayes Realty Co.**

### **COPPER: Royalton Kennels**

### **SUPPORTER: Fern Creek Woman's Club**

### **FRIENDS: Right At Home, Dale & Sharon Kramer**

**Also a special thanks to Doug Wolz, Cedar Springs Kroger for  
donating main dish and to Mike Sinkhorn Catering for volunteering  
as head chef and kitchen coordinator.**

**There is still time to become a sponsor, just call 239-7407 or e-mail:**

**[execdir@fchum.org](mailto:execdir@fchum.org)**

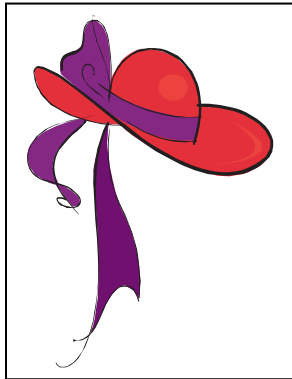
## G. E. MATCHING FUNDS

Since July 2006 we have received \$6,395 in matching funds –  
You can help FCHUM receive even more!

Calling all G.E. employees, retirees, and families! If you qualify for this program your dollars can be doubled! Your donation of \$25 or more will be matched by G.E. You must call 1-800-305-0669 or go to [www.gefoundation.com](http://www.gefoundation.com) and click on “matching gift program” and follow prompts to register. Help us contact other G.E. people and enlarge our G.E. Circle of Friends. Think of all the folks in our area who have connections to G.E. Especially as we build our new Facility this makes a tremendous difference.

## 2006 LOUISVILLE METRO GOVERNMENT FUNDING SUPPORT

Fern Creek Highview United Ministries (FCHUM) continues to be blessed through funding support from our local government. Mayor Jerry Abramson, our Councilpeople (Thank you Robin Engel, James Peden, and Stuart Benson) and the Department of Family Services recognize the value of our work, the efficiency and cost-effectiveness of our operations, and the key role community ministries play in caring for people in our community. Please be sure to acknowledge this help to our officials whenever possible and to encourage continued support.



### **Red Hat Society Ladies have fun while playing Santa and Easter Bunny!**

In December a collection of Red Hat Ladies gathered at Woodhaven Country Club for their annual Christmas party. In addition to having a wonderful dinner and a lot of fun these ladies also collected toys and food for our Individual & Family Assistance Center's Holiday Cheer program. Renee loaded up 357 toys and 211 pounds of food. Just recently they brought many Easter Baskets to be distributed to children through our Individual & Family Assistance Center.

**THANK YOU RED HAT LADIES!** We always enjoy seeing Red Hats at our annual GALA, and hope to see several tables full this year. There will be a special prize for the Queen Mother with the most ladies present.

### **A BIG THANKS TO:**

**St. Stephen Lutheran for providing Easter baskets and bags for both the frail, older participants at the Adult Day Center and the children at the Individual & Family Assistance Center**

**OPPORTUNITIES TO HELP:** Respond to Wish Lists...Use our Thornton Fund Cards...Use our Kroger or Valu Market Gift Cards ...Designate donations to Goodwill to benefit our IFAC office...Designate FCHUM in Wills, Bequests, and Memorials...G.E. Employees participate in our Matching Funds program...Recycle computer ink cartridges...Support and Attend special events like our Annual GALA, picnics, festivals, and benefit concerts. And most importantly keep Fern Creek Highview United Ministries in your prayers!!!

**FOR MORE INFORMATION CALL OUR OFFICE 239-7407  
OR VISIT OUR WEBSITE AT FCHUM.ORG**

**INDIVIDUAL &  
FAMILY  
ASSISTANCE  
CENTER  
NEEDS LIST**

Tomato products,  
pasta, cereal, canned  
meats (spam, ravioli),  
dish washing liquid,  
tooth paste,  
shampoo, flour,  
sugar, paper towels,  
toilet paper

**VOLUNTEERS**

The Adult Day Center needs  
program volunteers every other  
Tuesday afternoon, Wednesday  
morning & afternoon, Thursday  
morning, and Friday afternoon.

Call 239-7431 or e-mail  
[execdir@fchum.org](mailto:execdir@fchum.org) for more info.

**ADULT DAY  
CENTER  
NEEDS LIST**

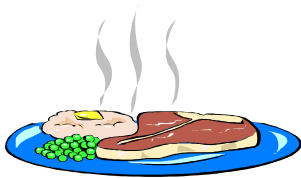
100% fruit juices,  
bleach,  
fruit cocktail in pear  
juice, peanut butter,  
paper towels, heavy  
duty paper plates,  
paper dessert bowls  
and cups (non-  
Styrofoam please)

**SPECIAL THANKS to Fairmount  
Baptist Church for a very generous  
contribution!**

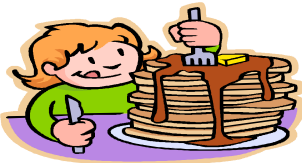
**OPPORTUNITIES TO HELP:**

**Are you competent and comfortable working with computers? We  
need some help from someone with expertise in ACCESS data base  
systems and we need help with Website management.**

**CALL OUR OFFICE 239-7407**



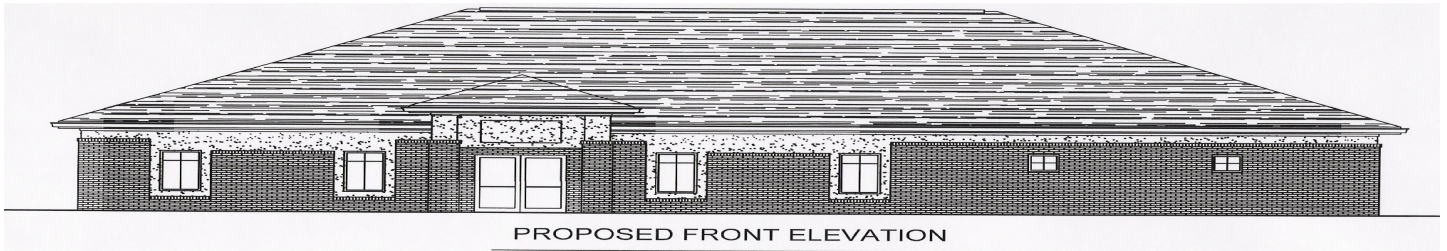
Special Thanks to the Fern Creek **Outback Restaurant** for hosting  
our winter Fundraiser in cooperation with Bob Beard and Cedar  
Creek Baptist, including funds to be matched from G.E. this event  
produced over \$16,000!



Special Thanks to the Fern Creek **Applebee's Restaurant** for hosting  
our Flapjack Fundraiser in March and to staff person Jana Pedowitz  
and all who attended, this event produced almost \$1,000!

**Fern Creek/Highview United Ministries** is a not-for-profit 501 C 3 organization and all donations are tax deductible. IFAC is funded in part by Louisville/Jefferson County Metro government. The ADC is funded in part under a contract with KIPDA and the Commonwealth of Kentucky, Cabinet of Health & Family Services with funds from the U.S. Department of Health & Human Services and with funds from Louisville/Jefferson County Metro Government.

# BUILDING TO SERVE

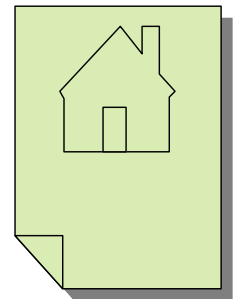


## Cost

\$450,000.00 with future development as needed.

## Funding

- Capital Campaign to raise **\$350,000.00**
- Over \$100,000 cash donations & seed money received in less than a year!
- Additional pledges committed
- Over \$100,000.00 in-kind gifts and services already committed
- Church, Civic, Business, Government, and Community Partnerships
- Naming Opportunities available for Food Pantry, Conference Room, Service Areas
- Memory and In Honor Bricks



## The Capital Campaign: What It Will Take

1 gift at...	\$350,000
4 gifts at...	\$100,000
7 gifts at...	\$ 50,000
14 gifts at...	\$ 25,000
35 gifts at...	\$ 10,000
70 gifts at...	\$ 5,000
140 gifts at...	\$ 2,500
350 gifts at...	\$ 1,000



And many more of varying amounts, all important to our cause...

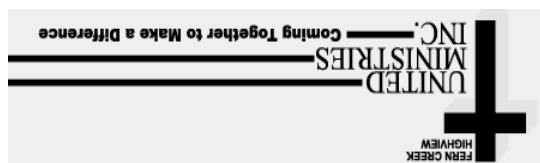
Contributions can be sent to Fern Creek Highview United Ministries, "BUILDING TO SERVE" campaign 7502 Tangelo Drive, Louisville, KY 40228. For more information call (502) 239-7407 or e-mail [execdir@fchum.org](mailto:execdir@fchum.org)

## MARK YOUR CALENDARS – GALA 2007

Saturday, May 12, 2007 is the date set for our annual *Pennies from Heaven* Dinner & Auction **GALA**. This wonderful event takes place the weekend after Derby (Some of you can bring all your earnings from the races and put them to a good cause!) Our event location is once again St. Gabriel's Catholic Church on Bardstown Road, thank you St. Gabriel parish for providing such a fine facility for our use. Look inside for information about tickets, auction item donations and event sponsorships. We also need volunteers to help with various GALA related tasks. Just call our office, 239-7407 to get involved.

**COOKBOOKS:** We still have some **COOKBOOKS** available. Just 2 for \$10 Almost 500 recipes in an attractive hardback, 3 ring vinyl binder. The best recipes from all the best church cooks! Great gift ideas for birthdays, weddings, graduations, housewarmings, and collectors!

Fern Creek Highview United Ministries, Inc.  
7502 Tangelo Drive  
Louisville, KY 40228



NON PROFIT ORG  
UNITED STATES  
POSTAGE PAID  
LOUISVILLE, KY.  
40228  
PERMIT #0593