



FERN CREEK/HIGHVIEW UNITED MINISTRIES NEWS

Volume 8
Issue 4

WINTER
2007

7502 Tangelo Drive, Louisville, KY 40228 / Central Office: (502) 239-7407, Fax: (502) 239-7454

MEMBER CHURCHES

Beulah Presbyterian
Cedar Creek Baptist
Fern Creek Baptist
Fern Creek Christian
Fern Creek United Methodist
Good Shepherd
Highview Baptist
Lighthouse Christian Center
Louisville Chinese Christian
New Vision Ministry Center
St. Alban's Episcopal
St. Bernard Catholic
St. Gabriel Catholic
St. Stephen C.E.C.
St. Stephen Lutheran
Seaton Park Baptist
Solid Rock Church of God
Summit Heights United
Methodist
Trinity World Outreach
Center
and the
Fern Creek/Highview
Ministerial Association

**VISIT OUR WEBSITE
FCHUM.ORG**

HAPPY NEW YEAR!

First, regardless of situation, I pray that everyone experienced a meaningful and blessed Christmas season. Here at FCHUM, our staff and volunteers were blessed once again with the opportunity to share God's grace with our neighbors in need. Let me share a story –

I was visiting with some friends and as we talked about Christmas preparations, the young mother commented on their surplus of Christmas trees. "For the life of me I don't know why we bought a new tree this year. The old one was just fine, now it's just standing out in the garage.

The very next day one of our staff told of a young mother she knew, who along with her three young daughters, that because of a domestic violence situation found themselves needing to find a new home. Fortunately new quarters were found, and with the help of family and friends she was moved in with just the barest of necessary furnishings. Thankful for all the help she had received the young mother still somewhat disappointedly noted that the girls probably wouldn't have much of a Christmas, they didn't even have a Christmas tree.

I called my friend with the garage Christmas tree, told her of the situation and she was elated that we could find her tree a home. She asked about the children, their ages and sizes then asked if I could give her a couple of hours. I told her sure, just call me when ready. A few hours later I went over to pick up the tree. There was a beautiful tree, a bag filled with brand new ornaments and lights, a new warm blanket, and a gift certificate to Papa Johns. But in addition to the tree and decorations there were also three sets of packages –three gifts for each child.

That evening I delivered the tree, decorations and gifts. One of the little girls upon seeing the tree on their front porch exclaimed, "Mommy, someone left a Christmas tree on our porch." As much as the girls were excited the mother was grateful. Tears coming to her eyes she whispered that she was just thankful for the tree, she didn't expect all the decorations, especially new ones. The blanket, the gift certificate, the gifts for her daughters were more than she could comprehend.

For one mother – the chance to use a resource to help another mother and to teach her children a lesson about sharing, about Christmas.

For another mother – in the guise of a tree and a few packages, the gift of hope and the joy of seeing her daughters experience some degree of the spirit of Christmas even in the midst of their upheaval.

Extra Christmas trees, day old bread, food baskets from a local high school, a chicken frying men's club, toys from Red Hat Ladies and from Hayley's Closet, visits from Santa to frail older adults, a generous check from a past caregiver, beautiful concerts, pennies saved by elementary school children to help FCHUM help others, a bulldozer for Christmas, churches open to seeing beyond the demands of their own budgets and recognizing the greater needs of our community and accepting God's call to respond. Yes, God- Emmanuel- is still in our midst, and as we begin a new year we have the privilege again to be partners in God's Grace.

*God's Peace & Blessings,
Rev. Ron Loughry*

**"Building To Serve" "2007 Pennies From Heaven Gala"
See details inside!**

Fern Creek/ Highview United Ministries Programs

INDIVIDUAL & FAMILY ASSISTANCE CENTER -

Renee Bryant, MSW,
Director

"The Spirit of the Lord is upon me ...to bring good news to the afflicted..." (Isaiah 61)

Thank you to all who provided

Holiday Cheer help through food baskets, toy donations or by adopting families for Christmas. This year IFAC provided 127 Thanksgiving food baskets, 124 Christmas food baskets, 71 families with 194 children were adopted for Christmas and an additional 301 children received gifts through our Santa Shoppe. A big thanks to all our wonderful volunteers, and to Fern Creek Baptist and Beulah Presbyterian for donating space for these programs. Also a special thanks to several Red Hat Lady Society clubs for their generous annual Christmas toy collection.

Please call Renee or Jana at 762-0630 or e-mail at ifacdir@fchum.org for more information.

HEALTH EQUIPMENT LOAN PROGRAM (HELP)

Health equipment (wheel chairs, walkers, shower stools, elevated and portable toilets, canes, etc.) is available for loan. For more information call 239-7431. Equipment is stored in space donated by the Fern Creek Space Center.

FAMILIES IN TRANSITION

Fern Creek/Highview United Ministries serves as a facilitating agency in partnership with the Jefferson County Family Courts System implementing a court ordered program for all couples with children under 18, undergoing divorce, designed to enhance parents sensitivity to the special needs of their children during this transition. Sessions take place at Summit Heights United Methodist Church. For more information call Renee Bryant, 762-0630.

Fern Creek/Highview United Ministries is a not-for-profit 501 C 3 organization and all donations are tax deductible. IFAC is funded in part by Louisville/Jefferson County Metro government. The ADC is funded in part under a contract with KIPDA and the Commonwealth of Kentucky, Cabinet of Health & Family Services with funds from the U.S. Department of Health & Human Services and with funds from Louisville/Jefferson County Metro Government.

ADULT DAY HEALTH CENTER -

Rev. Ron Loughry, Director

"Joy to the World" & "auld lang syne" are both songs and sentiments we experience frequently throughout the holiday season. At the ADC, our staff and volunteers strive to bring the blessing of Christmas joy to our frail, older participants and their families through a great many wonderful activities and special programs. For many, experiences of joy are few and far between. Memory loss and death also makes "auld lang syne" a somewhat bittersweet sentiment. But again, God gives us the opportunity to be friends and family and memory-keepers for our participants and families. Thank you to everyone who helps us make a difference in people's lives, one day at a time, one life at a time.

To visit or volunteer just call Ron or Nurse Alice at 239-7431 or e-mail at execdir@fchum.org

Living the Gospel: A Widow's Mite

We all know the parable, along with all our favorite gospel stories, but how often are our hearts open to experiencing these stories incarnated into our daily lives?

Her deceased husband once attended our Adult Day Center, she lives on a limited budget. Enough to get by on. She visits our Individual & Family Assistance Center to occasionally pick up some day old bread, but more often for company and conversation. Just before Christmas she made another visit, but this time pulled one of our staff aside and gave her a check for \$50 to help with building our new facility. We have received many generous gifts and will need many more to complete our new facility, but none represent God's grace and faithfulness more than this widow's mite.

2006 LIGHT UP FERN CREEK & HIGHVIEW HOLIDAY FEST

Thanks to everyone who contributed to making this year's events a success. Our community can be proud of the spirit of cooperation demonstrated by the sponsoring organizations and individuals: Fern Creek Women's Club, Fern Creek High Alumni Association, Fern Creek Community Association & Chamber, Fern Creek Rotary, Fern Creek Lions Club, Fern Creek and Highview Fire Departments, Highview Business Association, Highview Hardware, Councilmen Robin Engel and James Peden, and the Fern Creek/Highview United Ministries. This year's event included many highlights. We give a special thank you to the restaurants and businesses that made a Taste of Fern Creek a culinary delight: Papa John's and McAlister's, and Graeter's, and to Doug Wolz of Kroger for providing soft drinks and paper products. The Highview Business's for sponsoring Carriage Rides. We applaud all the youth and children's groups who participated in the Tree Decorating Contest. The winner this year was Girl Scout Troop #649 sponsored by the Fern Creek Traditional High School Alumni Association. Also special thanks to Karen & Roger Roalofs of Papa John's for supplying the Pizza Party for the winners, and to our Fern Creek WAL-MART & Bobby Orr for donating all the artificial trees. All of the trees and their decorations went to FC/HUM to be distributed to families at Christmas. Also a warm thank you to those who contributed canned goods and non-perishables to the Santa's Basket appeal. FC/HUM is very thankful for the multitude of Love Light requests to support its valuable ministry within our community. We also want to thank Fern Creek Christian and all the entertainers who provided a wonderful musical conclusion to Saturday evening's activities with the Fern Creek/Highview United Ministries Holiday Benefit Concert.

Next year's dates are:

Highview Holiday Fest-Friday, December 7th & Light Up Fern Creek-Saturday, December 8th

2006-2007 LOUISVILLE METRO GOVERNMENT FUNDING SUPPORT

During this new fiscal year FCHUM is receiving Metro funds to supplement our IFAC program and our Adult Day Center services, and the second \$15,000 installment in a \$30,000 pledge from our three councilmen (*Thanks Robin Engel, James Peden, & Stuart Benson*) toward our Building to Serve project. There are also possibilities of extra building funds from Metro as well. The lunches provided at our Adult Day Center are made possible through the **Metro Nutrition Program**. Our councilpeople, **Mayor Jerry Abramson**, & the **Metro Dept. of Human Services** recognize the great value of our work and our integrity in providing services. Please be sure to acknowledge this help to our officials whenever possible and to encourage continued support.

OPPORTUNITIES TO HELP:

Are you competent and comfortable working with computers? We need some help from someone with expertise in ACCESS data bases systems and we need help with Website management.

CALL OUR OFFICE 239-7407

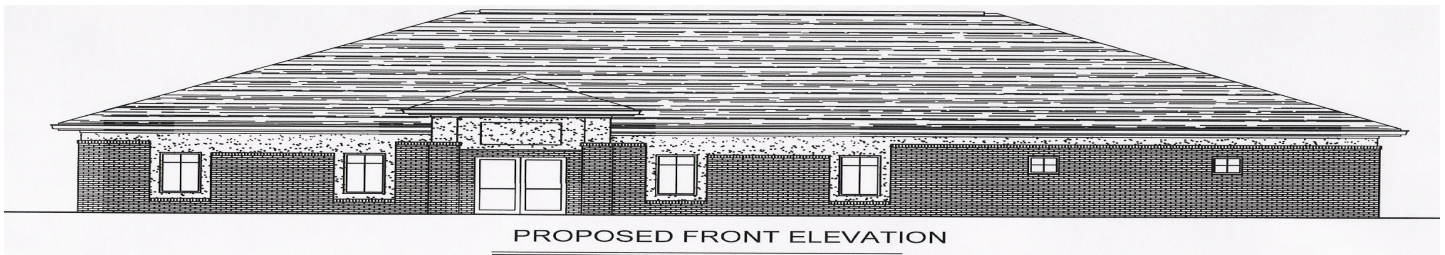
THANK YOU: St. Gabriel parish \$20,000 gift to our Building to Serve campaign!

Eagles Men's Club for \$1,000 annual grant – keep that chicken frying ! St. Gabriel's Men's Club for \$5,000 from Basketball Tournament! Red Hat Ladies Christmas Toy Collection! Lion's Club & FCTHS JR. ROTC for Christmas food baskets, Southern High for Christmas food baskets, Fern Creek Baptist and Beulah Presbyterian for donating space for our Holiday Cheer and Santa's Shoppe programs, Randy Coulter of Crown Trophy for trophy donation, FC Women's Club for red stocking \$ donations and ADC Christmas party, and all our wonderful volunteers!

G. E. MATCHING FUNDS

Calling all G.E. employees, retirees, and families! If you qualify for this program your dollars can be doubled! Your donation of \$25 or more will be matched by G.E. You must call 1-800-305-0669 or go to www.gefoundation.com and click on "matching gift program" and follow prompts to register. Help us contact other G.E. people and enlarge our G.E. Circle of Friends. Think of all the folks in our area who have connections to G.E. Especially as we build our new FACILITY this could make a tremendous difference.

BUILDING TO SERVE

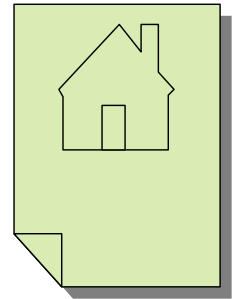


Cost

\$450,000.00 with future development as needed.

Funding

- Capital Campaign to raise **\$350,000.00**
- Over \$100,000 cash donations & seed money received in less than a year!
- Additional pledges committed
- Over \$100,000.00 in-kind gifts and services already committed
- Church, Civic, Business, Government, and Community Partnerships
- Naming Opportunities available for Food Pantry, Conference Room, Service Areas
- Memory and In Honor Bricks



The Capital Campaign: What It Will Take

1 gift at...	\$350,000
4 gifts at...	\$100,000
7 gifts at...	\$ 50,000
14 gifts at...	\$ 25,000
35 gifts at...	\$ 10,000
70 gifts at...	\$ 5,000
140 gifts at...	\$ 2,500
350 gifts at...	\$ 1,000



And many more of varying amounts, all important to our cause...

Contributions may be sent to Fern Creek/Highview United Ministries, "Building to Serve" Capital Campaign, 7502 Tangelo Drive, Louisville, KY 40228. For more information call (502) 239-740

COOKBOOKS: We still have some COOKBOOKS available. Almost 500 recipes in an attractive hardback, 3 ring vinyl binder. The best recipes from all the best church cooks!

Great gift ideas for birthdays, weddings, graduations, housewarmings, and collectors!
Originally \$10 each they are now selling for 2 for \$10!!!

MARK YOUR CALENDARS FOR THIS YEAR'S PENNIES FROM HEAVEN GALA

MAY 12, 2007

To make donations for our auction, for sponsorship information, for tickets, or for volunteer opportunities call (502) 239-7407 or e-mail execdir@fchum.org

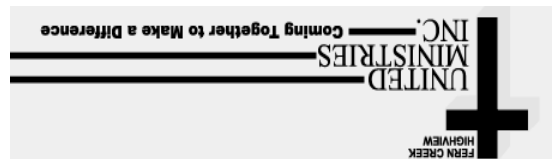
START COLLECTING THOSE PENNIES (ROLLED PLEASE)

FOR OUR ANNUAL PENNY CHALLENGE AT THE GALA!

OPPORTUNITIES TO HELP: Respond to Wish Lists...Use our Thornton Fund Cards, Kroger Gift Cards or purchase Valu Market Certificates from our office...Designate donations to Goodwill to benefit our IFAC office...Designate FCHUM in Wills, Bequests, and Memorials...G.E. Employees participate in our Matching Funds program...Recycle computer ink cartridges...Support and Attend special events like our Annual GALA, picnics, festivals, and benefit concerts. And most importantly-keep Fern Creek/Highview United Ministries in your prayers! For more information call our office 239-7407 or visit our website www.fchum.org

Fern Creek Highview United Ministries, Inc.
7502 Tangelo Drive
Louisville, KY 40228

NON PROFIT ORG
UNITED STATES
POSTAGE PAID
LOUISVILLE, KY.
40228
PERMIT #0593



APPLEBEE'S FLAPJACK FUNDRAISER



TO BENEFIT
FERN CREEK/HIGHVIEW UNITED MINISTRIES

SATURDAY, MARCH 3RD, 8AM TO 10AM
FERN CREEK APPLEBEE'S (NEAR KROGER)

\$5.00 ALL-YOU-CAN-EAT PANCAKES
TICKETS IN ADVANCE, LIMITED NUMBER
CALL 239-7407



PENNIES FROM HEAVEN 2007 GALA DINNER & AUCTION

SATURDAY, MAY 12TH 2007, DOORS OPEN AT 6:00 PM
ST. GABRIEL CATHOLIC GYM
5505 Bardstown Road

SILENT & LIVE AUCTIONS, CATERED DINNER

Mystery Bags—Door Prizes --Annual Penny Contest

Tickets \$20 available soon
Call 239-7407