



FERN CREEK/HIGHVIEW UNITED MINISTRIES NEWS

20TH ANNIVERSARY YEAR *****"UNITED TO SERVE"

Volume 10
Issue 5

HOLIDAY
2008

9300 Beulah Church Road, Louisville, KY 40291 / Central Office: (502) 762-9608, Fax: (502) 762-9609

MEMBER CHURCHES

Beulah Presbyterian
Cedar Creek Baptist
Fairmount Baptist
Fern Creek Baptist
Fern Creek Christian
Fern Creek United Methodist
Good Shepherd
Highview Baptist
Life Bridge Christian
Louisville Chinese Christian
New Vision Ministry Center
St. Alban's Episcopal
St. Bernard Catholic
St. Gabriel Catholic
St. Stephen C.E.C.
St. Stephen Lutheran
Seaton Park Baptist
Solid Rock Church of God
Summit Heights United Methodist
Trinity World Outreach Center
and the
Fern Creek/Highview Ministerial
Association

**VISIT OUR WEBSITE
FCHUM.ORG**

Ron's Ramblings,

EXECDIR@FCHUM.ORG

Season's Greetings! I write season because I hope to have this in your hands around Thanksgiving and therefore I want us to consider the season - a season of celebration. FCHUM is bringing to a close its 20th anniversary year, a year that has been full of great accomplishments amid great challenges. Celebrating two decades of service our community in just the last two years initiated the "Building To Serve" campaign during which through God's blessings we built and moved into our wonderful new 8,000 square foot ministry facility valued at \$750,000. Through the generosity of many in-kind gifts our cost came only to about \$550,000. And, finally, we find ourselves blessed by only needing \$185,000 to pay off the debt freeing up over \$1,000 a month to be used in direct services for our neighbors. Below you will read about an opportunity to share in this blessing we are calling the 20 Days of Christmas. Yes, we are well aware that liturgically this is the season of Advent but it just seemed like a good expression to use as we head toward that blessed day of celebration. I hope you will feel inspired to join in this meaningful effort!

God's Peace & Blessings,

RON L.

The 20 Days of Christmas

Starting Monday December 1st FCHUM is asking each family to set aside a white envelope (see the story inside). Each day, instead of that extra soda or cup of coffee or happy meal, simply place \$1.00 inside; perhaps take to time to talk about the blessing of giving with the family.

Then on Sunday December 21st, send the envelope to FCHUM - 9300 Beulah Church Road, Louisville KY 40291 marked 21 Days of Christmas. We hope to have our building debt retired by early 2009. If you want, write a short note about your family's journey through this Advent season and your response to reaching out to other families. Thank You!

The White Envelope: A Christmas Story

"Τι ιαυί ὁ ἡδῶν, ηἰεῖτε εἰωθέμῃε ἡαεῖ ὄμῃε ἡε ὄμῶεεεῖ ἡε ἡαῖ ἡεῖμῶα ἡεε. αἰ ἡῶε, ἡ εεεἡεεεεὸὸεῖμ, ἡ εἡεἡεἡεἡεἡ. ἡ ἡῶα ἡεεἡεε ἡεἡαεε ἡε ὄμῶεεεῖ ἡε ἡαῖ ἡεε εἡ ἡε ἡῶα 10 ἡεῶα ἡ ἡ. ἡ ὄμῃ ὄεεῶα ὄεεῶαε ἡ ἡαῖὄῶε ἡῶεε ἡεἡεῖμῶα---ἡε, ἡἡ ἡε ἡαε ἡεῶεἡε ἡε ἡεἡμῶα, ὄαῖ ἡε εἡεἡεεῶα ὄμῃεῖμ ἡε εἡ- ἡαεἡεἡεἡε... ἡε εἡῶεἡε ἡαῖεἡε ὄμῃαε ὄμῃ ἡε ἡῶα ἡεἡαε ἡ εεἡ ὄ ἡε εἡ αἡεἡε ἡῶεἡ ὄμῃ ὄμῃ ἡε εῶμῃε ἡἡεἡε εἡ ἡῶεἡεῖμ---ἡε εεεἡ εεαῶε εἡ εεἡεἡεἡεἡ ὄεεῶαε ἡἡα εἡαῖεἡἡεἡε ἡε ὄμῃεἡεἡε εἡε. ἡ ἡἡεἡε εε εεἡἡεἡε ἡῶἡ, ἡ εεεεεεε ἡε ἡεῶα ἡ ὄμῃὄμῃ ἡε εἡὄῶα ἡεἡἡ, ἡἡεὄμῃε, ἡεἡ ὄμῃ ἡ εἡἡε. ἡ ἡεεεεε εἡ ἡἡεἡεἡε ἡεεεῶα ἡαῖ εἡ ἡε ἡαῖὄῶε. αἡε εἡἡεἡεἡεἡ εῶε εἡ ὄμῃ αῖαῖαῶα ἡῶἡ.

ααἡ ἡἡ, ἡεἡ ἡῶα 12 ἡεῶα ἡεῶα, ἡῶα ἡεἡἡεἡε ὄμῃ ἡε ἡαῖεἡ ἡεαῶε ὄμῃ ἡε ἡεἡἡ εε ὄμῃεἡεεε; ὄμῃ ἡεἡἡ ὄεεἡε ἡεἡμῶα, ἡεἡε ἡῶα ὄ ἡἡ-ἡεὄεαε ἡῶεε ὄεὄεἡἡ ὄ ἡεὄἡ ἡἡἡἡε ὄμῃ ὄμῃ εἡἡε-εἡἡε ἡεὄαεε. αἡεἡε ἡἡαῖεἡεἡε, εἡεἡεε εἡ ἡεὄαεἡε ἡ ἡὄεεεε ἡεὄἡ ἡεἡἡεἡε ἡεἡεε ἡ ὄε ἡε ἡἡ ἡεἡε εἡἡεἡε ἡεἡ ἡεἡεἡε, ἡεἡἡεε ὄ ἡεὄἡ εἡἡὄμῃ ἡ ἡαῖ ὄμῃ εἡ ἡεεἡε ἡεἡεἡ ὄμῃε ὄμῃ εἡἡε αῖεἡἡἡ ὄμῃ ἡὄἡἡεἡε ἡεἡ. ἡ ἡε ἡὄἡεε ὄεεὄῶα, ἡ ἡῶα ὄμῃεἡε ἡ ἡε ἡεὄἡ ἡε ἡεἡε ἡεὄἡ ἡῶα ἡεἡἡεἡε ἡεἡεὄῶα, ὄ ἡεἡε ἡε ἡεἡεἡε εεἡἡεἡε εἡ ἡἡἡεἡε ὄ ἡεἡἡεἡε ἡ εὄμῃ. ἡ ἡῶα ὄ ἡαἡαἡ ἡε ἡὄεἡὄε ἡεὄἡ ἡὄαεἡαἡἡ εἡαῖε ἡἡ ὄεεἡε. αἡἡ, ἡε εἡεεε αἡ ἡὄἡἡεἡε ἡεἡ. αἡ ἡἡ εὄαεἡ ἡεεεἡε εἡὄἡ. ἡε ὄμῃ εὄεεε ἡε ἡεἡεἡ ὄμῃ εἡἡ αἡ εἡἡ ἡε ἡὄἡ, εε ἡὄεεεἡεε ὄμῃαε εἡ εἡἡ ἡὄἡεἡε ἡεἡε εὄμῃε ὄμῃαεὄεἡ, ὄ ἡεἡε ἡε ἡἡεἡ ἡεεε ἡεὄἡ εἡαῖεἡἡ ὄεἡἡἡεεεε εεεεὄῶα. ἡ ἡαῖὄῶαε, ἡεὄἡεε ὄεἡεεε ἡε, ἡεἡἡ εἡε εεὄε ἡὄεἡἡ, ἡἡ ἡεἡε ἡαῖ ἡε ἡεἡε εἡαῖε εὄὄαε ἡἡ, ἡε ἡὄεε. ἡεἡἡ ἡεὄαε ὄ ἡἡ ἡε ἡἡεἡεὄῶα, ὄαῖ ἡἡεἡε ἡεἡε ἡεἡε εἡαῖε ἡὄἡε ἡε εεὄἡἡ ἡεἡεἡ ἡαῖ ἡε ἡεἡε."

ἡ ἡαῖὄῶαε ἡὄαεε ἡεἡε-ὄμῃ ἡεἡε-ὄμῃ εε ἡεἡ ἡεἡε, εὄὄαεἡε εἡὄεεεε ἡεἡἡε ἡεὄεαε εἡἡὄὄἡἡ, ὄὄἡεὄὄἡἡ ὄμῃ ἡὄεἡἡεἡε. αἡὄἡἡ ἡεε εεεὄ εἡ ἡεἡ ἡεἡεἡἡ εὄμῃε. αἡὄἡ ὄεἡεἡἡἡ, ἡεἡ ἡ ὄ ἡεὄἡ ἡἡἡεἡε εἡἡε ἡἡε ὄμῃ ὄμῃαεἡ ὄμῃ ὄμἡἡἡεἡ ἡε ἡεἡἡεἡε εεὄεεεὄῶα ὄμῃ ἡεἡε ὄμῃ ἡεἡ ἡεἡ ὄμῃἡἡαἡἡ ἡ ἡε εἡἡε-εἡἡε ἡεὄαεε. αἡ ἡεἡἡὄῶα ἡὄε, ἡὄεεεε ἡε εἡαῶεἡῃε ἡ ἡε ἡεε, ἡε ἡἡ εἡἡεεε ἡεἡἡε ἡ ἡαῖὄῶαε ἡεὄἡ ἡὄε εἡἡε ὄμῃ ἡεὄἡ ἡεἡ ἡῶα εἡε εεεἡ εἡἡ ἡε. ἡε ἡἡε ἡῶα ἡε ὄμῃεεἡεἡ ἡεἡε ὄὄἡαῖ ἡεἡἡὄῶα ἡεὄἡ ἡεὄἡ ὄμῃ εἡ ἡαεεεεεἡε ἡεὄἡ. ἡ εὄὄεε ἡεἡἡὄῶα, ἡἡἡἡεε ἡε ἡὄεεἡεἡἡ---ἡε ἡεὄἡ ἡεἡἡε ὄ ἡἡαῖ ἡε ἡεἡὄἡἡ ἡὄἡεεεὄῶαε ἡἡαῖεἡἡεἡ ἡ ὄ εἡεἡεἡ εὄμῃε, ὄμῃεἡε ἡεὄἡ ὄ ἡεεἡε ἡ ὄ ἡὄεἡ ἡε εἡεἡἡἡ ὄμἡεἡεἡ ἡεἡε εἡε εὄε ὄαἡεεε ἡ ἡε εἡἡαε ἡε ἡεἡε ὄεεἡε ἡεἡἡὄῶα, ὄμῃ ἡ ὄμῃ ἡ.

αἡε εἡαῶεἡῃε ὄεεὄῶαε ἡε εεεἡεἡεἡε ἡε ἡαῖ ἡεἡἡὄῶα. ἡ ἡῶα ὄμῃὄἡἡ ἡε ἡὄἡ ἡεἡε ἡἡεἡε ἡ ἡεἡἡὄῶα ἡἡἡε ὄμῃ ἡαῖ εεἡεἡεἡε, εεἡἡεἡε ἡεεἡε ἡεἡ ἡἡἡ, ἡὄαε ἡὄαε ἡεἡε ἡεεε-εἡἡε ὄμῃεεἡὄῶαεἡ ὄμῃ ἡεἡεἡ εὄὄε ἡεἡἡεε ἡε εἡαῶεἡῃε εἡἡ ἡε ἡεε ἡ ἡεὄαεὄῶα εἡἡ εἡἡἡἡ. ἡ ἡε εεἡεἡεἡε εἡεἡ, ἡε ἡἡἡ εὄὄαε ἡὄἡ ἡ ἡἡ ἡὄεἡεεὄῶα ἡεἡἡἡἡ, ὄαῖ ἡε εἡαῶεἡῃε ἡεαῖ ἡἡ εἡ ὄμῃαε. αἡε ἡἡἡ εἡἡἡἡ εἡε ἡεἡε. ὄμῃ ἡε, ἡἡ ἡ ἡαῖὄῶαε ἡὄἡ ἡεὄἡ εὄαε ἡ εἡεὄεεε εὄὄἡεἡε. αἡεἡ ἡεἡἡὄῶα ἡἡἡε ὄμῃαε, ἡ ἡῶα ἡἡἡ ἡ ἡὄἡἡῃε εἡ εἡεεε ἡεὄἡ ἡ ὄὄἡεἡἡ εἡἡ ἡε ἡεε αἡ. ἡαῖ ἡεἡἡὄῶα ἡὄε εἡαῖε ἡε ἡὄεεἡε ὄμῃ εἡαῶεἡῃε ἡ ἡε ἡεε, ὄμῃ εἡ ἡε ἡἡἡε, εἡ ἡῶα ἡἡἡεε ὄμῃ ἡεἡε ἡἡε.

ὄεε ἡε ἡαῖ εεἡεἡεἡε, αἡὄεἡἡἡἡἡ ἡ ἡε ἡἡεἡ, εὄὄε ἡὄεεε ὄμῃ εἡαῶεἡῃε ἡ ἡε ἡεε εἡ ἡεεἡ εὄὄε. αἡε ἡὄεεἡεἡ ἡὄἡ εἡἡἡ ὄμῃ ἡἡεεὄἡ ἡεἡἡ εἡἡὄῶα εὄαῖ εὄαἡεἡε ἡεἡ ἡαῖ εἡὄἡεεεἡεἡεἡ ἡὄἡεἡε ὄμῃαε ἡε ἡεε ἡεἡε ἡεεε-εἡἡε ὄμῃεεἡὄῶαεἡ ἡὄἡἡεἡεἡ ὄμῃ ἡεἡεἡ εὄὄἡεἡἡ ἡὄἡε ἡεἡ ἡεἡ ἡεἡ εἡαῶεἡῃε.

Embrace the spirit of the White Envelope and join FCHUM in caring for our community through the 20 Days of Christmas!

Merry Christmas & Happy New Year
Fern Creek Highview United Ministries Staff

Fern Creek/ Highview United Ministries Programs

INDIVIDUAL & FAMILY ASSISTANCE CENTER

Renee Bryant, MSW, Director

On a recent rainy Saturday morning, hundreds of local Scouts went door-to-door collecting canned goods and delivering thousands of pounds of food to our facility. The rain was not able to dampen their bright spirit and energy. Thanks to all the troops, their leaders, and the churches where they meet.

Speaking of thanks, I also want to recognize volunteers with Kentucky Harvest who have so far this year delivered 18,442 pounds of food so far this year.

It shouldn't come as a surprise to anyone that we are assisting record numbers of people this year. In

October alone we saw 1,098 people. We are averaging a 39% increase over last year. During the fiscal year of July 2007-June 2008 we saw 8,733 people; in just four months of this year we have seen 3,644 people. The year isn't even half over!

Thanks to the space of our new facility we have been able to accommodate everyone and have benefited from having more food pantry space. In our old space we would have had to turn people away. Yet we need more help if we are going to be able to provide assistance. We are anticipating the need to provide Christmas for over 600 children this

Christmas through our Holiday Cheer adoption program and Santa's Shoppe. Last year 125 children were adopted and with the addition of our Santa

Shoppe over 500 children enjoyed gifts for Christmas. This year almost 300 children have been registered for our Holiday Cheer adoption list

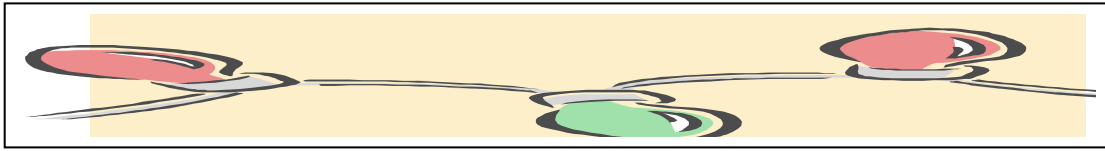
but we still have over 75 who have not been adopted. In addition we anticipate our Santa Shoppe assisting over 300 more children. Please take a look at the Holiday Cheer page and consider adopting a family for Christmas.

To volunteer or visit please call Renee at 762-9611 or e-mail at ifacdir@fchum.org

ADULT DAY HEALTH CENTER – Rev. Ron Loughry, Director

In October the ADC held its annual Open House, the first one in our new facility. In November the ADC has spent time thinking about how thankful we are for our new space and the fact that we can accommodate more participants and help more families. As the holiday season approaches the ADC is adorned with Fall and Thanksgiving decorations and staff are preparing for Christmas sorting through old decorations and figuring out how to best utilize them in the new building. And while the decorations add warmth and a sense of festivity, it is really the caring that takes place within the ADC's walls that creates real warmth and festivity. Each year, as December begins, the ADC enters into what we call Christmas Standard Time! It is a time of parties, entertainment, food and for good friends to gather. Visitors are welcome to stop by, we just ask that you call 762-9612 first so we can arrange a tour. We also invite individuals and church groups to help us provide small **Christmas Care packages** for our participants. Items like: candy (remember we do have some diabetics), handkerchiefs, lotion, gloves, small hand sanitizer, neck scarves (male & female), Christmas ornaments, Dollar Tree type items. The ADC also encourages individuals and church groups to schedule times to visit and lead sing-a-longs or host parties with our frail older adults. If you read the "White Envelope Story" elsewhere in this newsletter you can get the sense of how meaningful the gift of time, talent and Treasure can be for both the recipient and the giver. We do have openings at the ADC and winter is a good time to evaluate whether someone could benefit from participation in the ADC. Just give us a call to arrange a visit.

To visit or volunteer call Ron at 762-9612 or e-mail at excedir@fchum.org



HIGHVIEW HOLIDAY FEST

2008

FRIDAY, DECEMBER 12th, 6-8PM

Central Government Center & Highview Park on
Outer Loop

"IN THE HEART OF HIGHVIEW"

CHRISTMAS CAROLING, MUSICAL ENTERTAINMENT &
REFRESHMENTS

BUSINESS LIGHT UP CHALLENGE

HIGHVIEW BUSINESS SHOWCASE

CARRIAGE RIDES (starting at 6:30)

VISITS WITH SANTA CLAUS

SANTA'S BASKET

(FOOD COLLECTION TO HELP SANTA & FC/HUM FEED THE
HUNGRY)

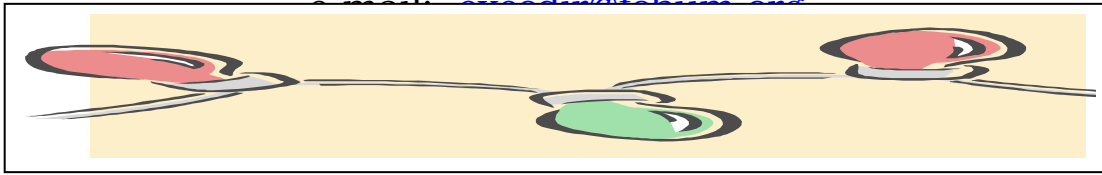
SPONSORED BY

THE HIGHVIEW BUSINESS ASSOCIATION,

COUNCILMAN JAMES PEDEN &

Fern Creek Highview United Ministries

For more HOLIDAY FEST information call 762-9608 or



LIGHT UP FERN CREEK 2008

SATURDAY, DECEMBER 13th

ACTIVITIES OF THE DAY 4:30-6 PM

CHRISTMAS TREE DECORATING CONTEST

(SPONSORED BY WAL-MART & LOCAL COMMUNITY ORGANIZATIONS)

BUSINESS LIGHT UP CHALLENGE

COMMUNITY ORGANIZATION SHOWCASE

TASTE OF FERN CREEK RECEPTION

(SAMPLE FOODS PROVIDED BY AREA RESTAURANTS & ORGANIZATIONS)

VISITS WITH SANTA & MRS. CLAUS

(ARRIVAL VIA FIRE TRUCK)

SANTA'S BASKET

(FOOD COLLECTION TO HELP SANTA & FC/HUM FEED THE HUNGRY)

FACE PAINTING (sponsored by FCHUM)

COMMUNITY LIGHTING CEREMONY

SPONSORING ORGANIZATIONS: FC WOMEN'S CLUB, FC LION'S CLUB, FC ROTARY, FC COMMUNITY ASSOC. & CHAMBER, FCTHS ALUMNI ASSOC., FC FIRE DEPT., & FERN CREEK/HIGHVIEW UNITED MINISTRIES

FOR MORE LIGHT UP INFORMATION call 762-9608 or e-mail: execdir@fchum.org

FERN CREEK/HIGHVIEW UNITED MINISTRIES

In conjunction with the 2008 10th annual

LIGHT UP FERN CREEK

LOVE LIGHT TREE



Once again Fern Creek/Highview United Ministries offers the opportunity for Holiday **Love Light** Dedications.

For a **\$10.00** donation, **LOVE LIGHTS** are a unique way to honor a friend, teacher, pastor, or family member.

LOVE LIGHTS can also be dedicated in memory of some special person. Acknowledgment cards are sent to people honored or to families of those remembered.

FOR MORE INFORMATION CALL:

762-9608 or e-mail execdir@fchum.org

Engraved 4" x 8" Engraved Brick Order Form

BRICKS TO BUILD CAMPAIGN

There are bricks on the outside and soon to be bricks on the inside!

Each brick is available for a \$100 donation. Each purchase goes directly to the FCHUM Building to Serve debt retirement.

Donor Information

Name _____

Address _____

City _____

State _____ Zipcode _____

Phone _____ E-mail _____

Brick Information:

Maximum 3 lines, 18 characters per line (including spaces and punctuation)

If mailing order form, send to:

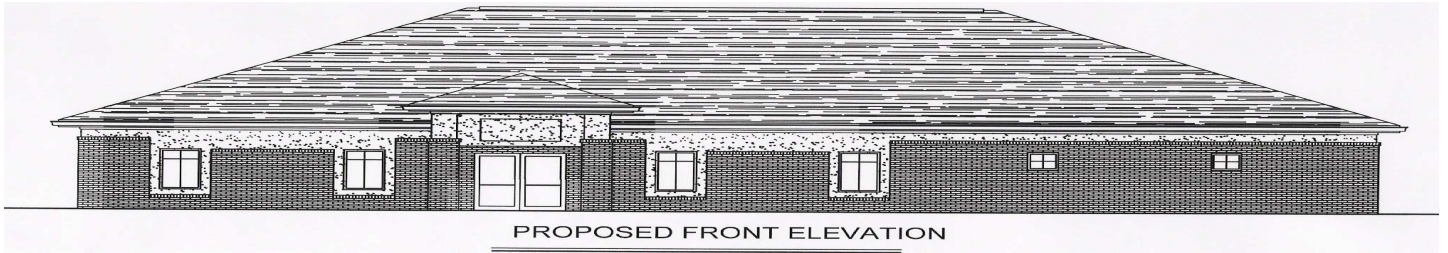
Fern Creek/Highview United Ministries

9300 Beulah Church Rd, Louisville, KY 40291

(502) 762-9608 fax: (502) 762-9609

e-mail: execdir@fchum.org

BUILDING TO SERVE



LESS THAN \$185,000 TO RETIRE BUILDING COST!

Contributions can be sent to Fern Creek Highview United Ministries, "BUILDING TO SERVE" campaign 9300 Beulah Church Rd, Louisville, KY 40291. For more information call (502) 762-9608 or e-mail execdir@fchum.org

PRAYER TASK FORCE

This is a Task Force I think all of us can be involved in - all of our pastors, and all of our churches, and all of our church members, and just maybe all of our community!

Mondays pray for the work of FCHUM in general.

Tuesdays pray for the IFAC and its specific work.

Wednesdays pray for the ADC and its specific work.

Thursdays pray for all the people we minister to, the hungry individuals and families, the frail older adults and their caregivers, the homeless, the disabled, the families involved in divorce, those in financial crisis.

Friday pray for the volunteers and staff engaged in this work.
on the appropriate day!

HOLIDAY CHEER ASSISTANCE PROGRAM 2008

Throughout the year, Fern Creek/Highview United Ministries helps families whom are in crisis. For many of these individuals who are struggling to provide the basic necessities of life, the holidays can be particularly stressful. In order to help families in our community, Fern Creek/Highview United Ministries will once again be conducting our
Holiday Cheer Program 2008.

We need families, groups, or organizations that are willing to adopt a family and/or sponsor food baskets!

Please contact Renee or Jana at 762-9611, the Individual & Family Assistance Center office as soon as possible if you can assist.

Holiday Meal Items

Stuffing Mix
1-10 lb. bag of potatoes
1-3 lb. bag of onions
2 cans of cranberry sauce
3 to 5 cans of green vegetables
(green beans, peas, etc.)
3 to 5 cans of mixed vegetables
(corn, yams, etc.)
1 to 2 cans of pie filling
1 bag of flour and 1 bag of sugar

\$15-\$20 gift certificate to buy
meat/perishable items

Suggested Christmas Buying Guidelines

- A. 1 to 2 outfits per child
(Not to exceed two)
*Example: 1 pair of pants
(jeans, etc. or skirt)
1 shirt or sweater
socks and undergarments*
Please note if a child has a
special need!
- B. 1 to 2 age appropriate gifts per
child
- C. (Optional) a gift for parent

***Deliver all items to Fern Creek/Highview United Ministries at
9300 Beulah Church Rd. (Corner of Beulah Church & Bardstown
Rd.-- at back of Beulah Presbyterian parking lot on upper level) on
November 24th for Thanksgiving and December 15th for Christmas!
Someone will be there between 9am -5pm to accept all deliveries.***

**It is extremely important that all items be delivered
on the appropriate day!**

COMMUNITY PARTNERS

FERN CREEK WOMEN'S CLUB Conducts fund-raiser to benefit FCHUM.

The Fern Creek Women's Club is offering raffle tickets for \$1.00 each or 6 for \$5.00 for the opportunity to own a beautiful afghan crocheted by Georgia Federated Women's Club member Fran Joseph. Fran Joseph has been active in Women's Club activities for over fifteen years serving in various offices and leading several projects. She is best known for her afghans. Her afghans have won First place in state competitions in Georgia. She is now 84, legally blind without her glasses but continues to read and crochet. Her daughter Celeste, former member of Fern Creek Baptist Church and former adm. ass't. for St. Alban Episcopal Church has moved back home to care for her mother.

SPECIAL THANKS

**PAPA
JOHNS**
Fern Creek
&
Mt. Wash

**NOAH'S
ARK**
Pet Shop

**FIRST
CAPITOL
BANK OF
KY.**

G.E. FOUNDATION

During the 2008 calendar year G.E. in matching donations from G.E. employees and retirees as donated \$22,390 in support of Fern Creek Highview United Ministries.

WAL MART

During 2008, Wal Mart had donated \$4,000 in support of FCHUM.

COMMUNITY FOUNDATION OF LOUISVILLE

Provided a \$10,000 emergency grant this October recognizing the growing needs and the role FCHUM plays in our community.

RON & BETH WEDDING GIFTS

Friends donated \$945 in honor of Rev. Ron Loughry & Beth Breetz's recent nuptials.



LOUISVILLE-JEFFERSON COUNTY METRO GOVERNMENT

Recognizing the key role that Fern Creek Highview United Ministries plays in serving our community the Mayor and Metro Council has included \$25,100 for our Individual & Family Assistance Center and \$17,500 for the Adult Day Center in the 2008-2009 fiscal year. In the Spring of 2008, Councilmen Robin Engel, James Peden, Stuart Benson, and Kevin Kramer, and others combined to provide \$129,500 to our Building To Serve campaign through their Community Development Funds.

KIPDA

As the Area Agency on Aging & Disabilities, KIPDA provides funding and support to our Adult Day Health Center

DARE TO CARE

As a Dare To Care Distribution Center, our Individual & Family Assistance Center receives regular staple foods, commodities, and produce on a regular basis.

TWENTY MEMBER CHURCHES

While providing approximately 18% of Fern Creek Highview United Ministries annual budget, just in the month of October 2008, our churches provided almost 1,800 pounds of food to our Individual & Family Assistance Center and over 800 volunteers in our various programs.

We give thanks for the support of these wonderful faith communities!

Fern Creek Highview United Ministries

9300 Beulah Church Road, Louisville, KY 40291

(502) area code

Central Office: 762-9608, fax: 762-9609

Individual & Family Assistance Center: 762-9611, fax: 762-9609

Adult Day Health Center: 762-9612, fax: 762-9613

Fern Creek/Highview United Ministries is a not-for-profit 501 C 3 organization and all donations are tax deductible. IFAC is funded in part by Louisville/Jefferson County Metro government. The ADC is funded in part under a contract with KIPDA and the Commonwealth of Kentucky, Cabinet of Health & Family Services with funds from the U.S. Department of Health & Human Services and with funds from Louisville/Jefferson County Metro Government.

**FOR MORE INFORMATION CALL OUR OFFICE 762-9608
OR VISIT OUR WEBSITE AT FCHUM.ORG**

Return Service Requested

**NON PROFIT ORG
UNITED STATES
POSTAGE PAID
LOUISVILLE, KY.
40228
PERMIT #0593**

**Fern Creek Highview United Ministries, Inc.
9300 Beulah Church Road
Louisville, KY 40291-2708**