



FERN CREEK/HIGHVIEW UNITED MINISTRIES NEWS

20TH ANNIVERSARY YEAR * * * * * "UNITED TO SERVE"

Volume 10
Issue 2

SPRING/
GALA
2008

9300 Beulah Church Road, Louisville, KY 40291 / Central Office: (502) 762-9608, Fax: (502) 762-9609

MEMBER CHURCHES

- Beulah Presbyterian
- Cedar Creek Baptist
- Fairmount Baptist
- Fern Creek Baptist
- Fern Creek Christian
- Fern Creek United Methodist
- Good Shepherd
- Highview Baptist
- Life Bridge Christian
- Louisville Chinese Christian
- New Vision Ministry Center
- St. Alban's Episcopal
- St. Bernard Catholic
- St. Gabriel Catholic
- St. Stephen C.E.C.
- St. Stephen Lutheran
- Seaton Park Baptist
- Solid Rock Church of God
- Summit Heights United Methodist
- Trinity World Outreach Center
- and the
- Fern Creek/Highview Ministerial Association

VISIT OUR WEBSITE
FCHUM.ORG

PENNIES FROM HEAVEN

2008 GALA AUCTION & DINNER

SATURDAY, MAY 10TH 2008
6:30 PM, Dinner served 6:45
ST. GABRIEL CATHOLIC GYM
5505 Bardstown Road

SILENT & LIVE AUCTIONS

CATERED DINNER

NO RYBOUND CONCERN



Tickets \$20

Mystery Bags—Door Prizes

Annual Penny Contest

Call 762-9608 for tickets

BUILDING TO SERVE PROGRESS

By the end of April 2008 we hope to have all programs relocated into our wonderful new facility at 9300 Beulah Church Road (on the property of Beulah Presbyterian). This beautiful new brick building will be the source of blessing to thousands of people each and every month. The past two years have witnessed miraculous generosity on the part of many people, companies, churches, government and groups. As we cross the threshold we owe only about \$200,000. The sooner we can pay off this amount the sooner we can redirect our full fund-raising energies to providing day-to-day ministry to those in need. Look inside for ways you can help retire the building debt before the end of 2008. This, our 20th anniversary year will be a year of blessing for sure!

GALA VOLUNTEER OPPORTUNITIES

THEME BASKETS

Contents should have a value of \$25 or more.
Call 762-9608 for more details.

SPONSORSHIPS

PLATINUM (\$1,000)
GOLD (\$500)
SILVER (\$250)
COPPER (\$100)
SUPPORTER (\$50)
FRIEND (\$25)

Call 762-9608 for details,
Deadline is Friday, May 2, 2008

MYSTERY BAGS

Contents of bags should have a value of \$15 or more.
Call 762-9608 for more details.

GALA EVENT DAY VOLUNTEER OPPORTUNITIES:

Set up: 10-12; Decorating: 12-3; Dinner & Auction: 5-9; Clean up: 8:30-10
Please call 762-9608 to volunteer!

BRING ALL THOSE PENNIES (PREFERABLY ROLLED) HIDING AROUND YOUR HOUSE TO THE GALA- PRIZES FOR MOST PENNIES! 772 ROLLS EQUAL A MILE OF PENNIES = \$386

A special thanks to Mike Sinkhorn Catering for volunteering as head chef and kitchen coordinator.

There is still time to become a sponsor, just call 762-9608 or e-mail: execdir@fchum.org

THANK YOU GALA 2008 SPONSORS!

PLATINUM

Red Bud Hill Dev.
Passport Advantage
Hayes Realty Co.

GOLD

Glen Ridge Health Campus

SILVER

Franciscan Health Care Ctr.
State Farm-Dave Metzger
Belmont Village

COPPER

Stickler & Associates
L&N Federal Credit Union

SUPPORTER

Fern Creek Woman's Club
T&C Contracting
Jim & Brenda Miller
Jim & JoAnn Greene

FRIENDS

Assurance Home Care
Les Cohen

G. E. MATCHING FUNDS

Since July 2007 we have received over \$19,000 in matching funds –

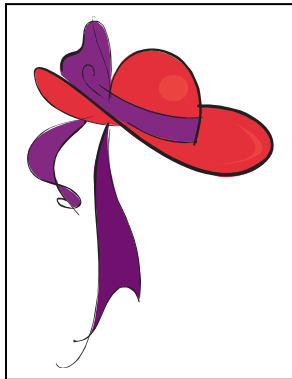
You can help FCHUM receive even more!

Calling all G.E. employees, retirees, and families! If you qualify for this program your dollars can be doubled! Your donation of \$25 or more will be matched by G.E. You must call 1-800-305-0669 or go to www.gefoundation.com and click on “matching gift program” and follow prompts to register.

Help us contact other G.E. people and enlarge our G.E. Circle of Friends. Think of all the folks in our area who have connections to G.E. Especially as we build our new Facility this makes a tremendous difference.

2007-08 LOUISVILLE METRO GOVERNMENT FUNDING SUPPORT

Fern Creek Highview United Ministries (FCHUM) continues to be blessed through funding support from our local government. Mayor Jerry Abramson, our Councilpeople (Thank you Robin Engel, James Peden, and Stuart Benson) and the Department of Human Services recognize the value of our work, the efficiency and cost-effectiveness of our operations, and the key role community ministries play in caring for people in our community. This spring Robin managed to raise \$59,500 from Council members funds. Please be sure to acknowledge this help to our officials whenever possible and to encourage continued support.



Red Hat Society Ladies have fun while playing Santa!

In December a collection of Red Hat Ladies gathered at Woodhaven Country Club for their annual Christmas party. In addition to having a wonderful dinner and a lot of fun these ladies also collected toys and food for our Individual & Family Assistance Center's Holiday Cheer program.

Renee loaded up hundreds of toys and many pounds of food.

THANK YOU, RED HAT LADIES!

We always enjoy seeing Red Hats at our annual GALA, and hope to see several tables full this year. There will be a special prize for the Queen Mother with the most ladies present.

A BIG THANKS TO:

St. Stephen Lutheran Church for hosting our annual Volunteer Appreciation Brunch!

Fern Creek/Highview United Ministries is a not-for-profit 501 C 3 organization and all donations are tax deductible. IFAC is funded in part by Louisville/Jefferson County Metro government. The ADC is funded in part under a contract with KIPDA and the Commonwealth of Kentucky, Cabinet of Health & Family Services with funds from the U.S. Department of Health & Human Services and with funds from Louisville/Jefferson County Metro Government.

**FOR MORE INFORMATION CALL OUR OFFICE 762-9608
OR VISIT OUR WEBSITE AT FCHUM.ORG**

BUILDING TO SERVE BRICKS TO BUILD CAMPAIGN

Engraved 4" x 8" Engraved Brick Order Form

Each brick is available for a \$100 donation. "A major portion of each purchase goes directly to the FCHUM Building to Serve debt retirement."

Donor Information

Name _____

Address _____

City _____

State _____ Zipcode _____

Phone _____ E-mail _____

Brick Information:

Maximum 3 lines, 18 characters per line (including spaces and punctuation)

If mailing order form, send to:

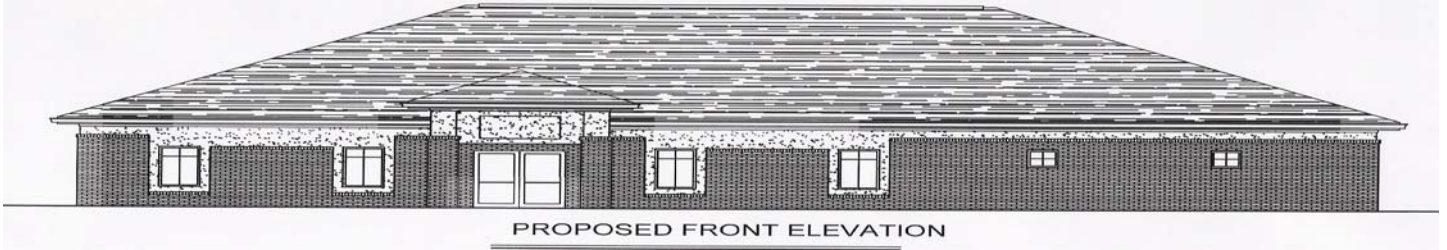
Fern Creek/Highview United Ministries

9300 Beulah Church Rd, Louisville, KY 40291

old number(502) 239-7407 new number 762-9608 fax: (502) 239-7454

e-mail: execdir@fchum.org

BUILDING TO SERVE

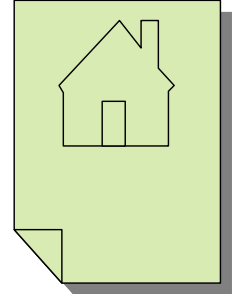


Cost

\$550,000.00 with future development as needed.

Funding

- Capital Campaign— **just \$200,000 needed to pay off loan.**
- Over \$350,000 cash donations & seed money received over the past two years!
- Additional pledges committed
- Over \$150,000.00 in-kind gifts and services already committed
- Church, Civic, Business, Government, and Community Partnerships
- Naming Opportunities available for Food Pantry, Conference Room, Service Areas
- Memory and In Honor Bricks



The Capital Campaign: What It Will Take

1 gift at...	\$ 200,000
4 gifts at...	\$ 50,000
8 gifts at...	\$ 25,000
20 gifts at...	\$ 10,000
40 gifts at...	\$ 5,000
80 gifts at...	\$ 2,500
200 gifts at...	\$ 1,000
400 gifts at...	\$ 500
2,000 gifts at...	\$ 100



And many more of varying amounts, all important to our cause...

Contributions can be sent to Fern Creek Highview United Ministries, "BUILDING TO SERVE" campaign 9300 Beulah Church Rd, Louisville, KY 40291. For more information call (502) 762-9608 or e-mail execdir@fchum.org

Fern Creek Highview United Ministries NEW CONTACT INFORMATION:

As we transition into our new facility there will be new phone numbers and addresses.

Address for all Fern Creek Highview United Ministries programs will be –

9300 Beulah Church Road, Louisville, KY 40291

New phone numbers will be: (502) area code

Central Office: 762-9608, fax: 762-9609

Individual & Family Assistance Center: 762-9610 & 9611 , fax: 762-9609

Adult Day Health Center: 762-9612, fax: 762-9613

E-mail addresses remain the same.

MARK YOUR CALENDARS

20th Anniversary Celebration

**Fern Creek Highview United Ministries will observe its 20th
Anniversary with a celebration on Saturday, June 14th at 2:00 p.m.**

**Fern Creek Highview United Ministries, Inc.
7502 Tangelo Drive
Louisville, KY 40228**

**NON PROFIT ORG
UNITED STATES
POSTAGE PAID
LOUISVILLE, KY.
40228
PERMIT #0593**

