



FERN CREEK/HIGHVIEW UNITED MINISTRIES NEWS

20TH ANNIVERSARY YEAR ***** "UNITED TO SERVE"

Volume 10
Issue 3

SUMMER
2008

9300 Beulah Church Road, Louisville, KY 40291 / Central Office: (502) 762-9608, Fax: (502) 762-9609

MEMBER CHURCHES

Beulah Presbyterian
Cedar Creek Baptist
Fairmount Baptist
Fern Creek Baptist
Fern Creek Christian
Fern Creek United Methodist
Good Shepherd
Highview Baptist
Life Bridge Christian
Louisville Chinese Christian
New Vision Ministry Center
St. Alban's Episcopal
St. Bernard Catholic
St. Gabriel Catholic
St. Stephen C.E.C.
St. Stephen Lutheran
Seaton Park Baptist
Solid Rock Church of God
Summit Heights United Methodist
Trinity World Outreach Center
and the
Fern Creek/Highview Ministerial
Association

VISIT OUR WEBSITE
FCHUM.ORG

Ron's Ramblings

2008 - Fern Creek Highview United Ministries marks two decades of service in uniting churches and community to care for our neighbors! 2008 – what a year of accomplishments! By the end of April, FCHUM had moved all programs into the new facility at 9300 Beulah Church Road. On May 28th we “officially” cut the ribbon welcoming all the community to visit our new location. On June 14th we gathered at Fern Creek United Methodist where it all began 20 years ago to celebrate our 20th anniversary! In 1988, ten churches began the work, now 20 years later 20 churches carry forth this vital work. In May of this year I was honored to observe my 12th anniversary with FCHUM squeezed in between our move and the GALA. The GALA was a grand success being a “sold out” event and raising \$15,000 for our everyday ministry work. As we start operating from our new facility we find that we have a building worth approximately \$750,000 that, due to generous in-kind work by people like Bob Beard, Larry Clark, Glenn Hall and many others, has only cost us approximately \$550,000. And because of everyone's generosity in donations, and grants and gifts we owe less than \$200,000.

Now, here is what we need at this point.

Join our “Prayer Task Force” – see inside.

Think creatively and sacrificially about helping us pay off the Building debt – less money spent on mortgage payments allows more assistance to those in need. Recently we received a donation from someone's estate because she remembered FCHUM in her will.

Consider volunteering – let us count the ways!

God's Peace & Blessings,

RON L.

Mattie Russell's Anniversary Punch

By popular request here is Mattie Russell's Anniversary Punch recipe – this is the punch everyone raved about at our 20th Anniversary celebration!

4c. sugar; 6c. water; juice from two lemons; 46 oz. can of unsweetened pineapple juice; 2-3 large bananas crushed; 16 oz. can of frozen orange juice undiluted. Mix and freeze. Lay out of freezer at least two hours before using, when ready to use pour into punch bowl and add 2 liters of ginger ale.

THANK YOU GALA 2008 SPONSORS!

PLATINUM

**Red Bud Hill Dev.
Passport Advantage**

GOLD

Glen Ridge Health Campus

SILVER

**Franciscan Health Care Ctr.
State Farm-Dave Metzger
Belmont Village**

COPPER

**Stickler & Associates
L&N Federal Credit Union**

SUPPORTER

**Fern Creek Woman's Club
T&C Contracting
Jim & Brenda Miller
Jim & JoAnn Greene**

FRIENDS

**Assurance Home Care
Les Cohen**

**Please excuse if we missed any sponsors, let us know and we will correct in next issue.
A special thanks to Mike Sinkhorn Catering for volunteering as head chef and kitchen coordinator, and his great crew of volunteers.**

G. E. MATCHING FUNDS

Since July 2007 we have received over \$19,000 in matching funds –

You can help FCHUM receive even more!

Calling all G.E. employees, retirees, and families! If you qualify for this program your dollars can be doubled! Your donation of \$25 or more will be matched by G.E. You must call 1-800-305-0669 or go to www.gefoundation.com and click on “matching gift program” and follow prompts to register.

Help us contact other G.E. people and enlarge our G.E. Circle of Friends. Think of all the folks in our area who have connections to G.E. Especially as we build our new Facility this makes a tremendous difference.

**2007-08 LOUISVILLE METRO GOVERNMENT
FUNDING SUPPORT**

Fern Creek Highview United Ministries (FCHUM) continues to be blessed through funding support from our local government. Mayor Jerry Abramson, our Councilpeople (Thank you Robin Engel, James Peden, and Stuart Benson) and the Department of Human Services recognize the value of our work, the efficiency and cost-effectiveness of our operations, and the key role community ministries play in caring for people in our community. This spring Robin managed to raise \$59,500 from Council members funds. Please be sure to acknowledge this help to our officials whenever possible and to encourage continued support.



***Fern Creek/Highview United Ministries
Individual & Family Assistance Center
9300 Beulah Church Road, 762-9611***



School Supply List

****We need all school supplies in by July 28th!****

Pencils/Erasers

Highlighters

Paper towels

Markers

Hand Sanitizer

Colored Pencils

Pens (Black, Red or Blue)

Writing Tablets
(Grade 1, 2, & 3)

Facial tissues

Spiral notebooks

Crayons (8 or 24 count)

Steno notebooks

Calculators/Backpacks

Folders (with brads and/or
pockets)

Scissors (Fiskars preferred)

Composition books

Glue Sticks

Notebook dividers

Zip-lock Bags
(quart/gallon)

Wide Rule Notebook paper

Fern Creek Highview United Ministries PROGRAM
INDIVIDUAL & FAMILY ASSISTANCE CENTER

Renee Bryant, MSW,
Director

Wow! That is still the reaction we hear from visitors to our new facility. Our volunteers exclaim about having space to actually take a cart down the aisles to fill orders and about having space to move around without bumping into each other. Our Dare to Care food orders can be brought right in to our food pantry on wooden pallets rather than needing to be unloaded outside in all kinds of weather. Another wonderful feature of our new home is the client waiting room and interview offices. We are working on creating a children's corner with child size furniture a TV for videos and maybe even a wall mural. The clients now have a comfortable and hospitable waiting area, we have room for a volunteer receptionist who not only helps get clients started on filling out paperwork but who can also keep an eye on children while the parents are interviewed. Speaking of interviewing, we now have enough room and three offices for interviewing clients in privacy and respecting their dignity. In our old location there wasn't sufficient space for privacy but now we can close the door and not be overheard or if a client becomes teary during the interview everyone else isn't aware of that. And with a children's area available the children can be spared from sitting through hearing all the details of their family's crisis. Finally, while we are seeing more and more families needing assistance, thanks to our greater space for interviewing and food order processing they generally don't have as long a wait. We appreciate everyone who continues to volunteer in so many ways and want to remind all those summer gardeners to bring your surplus crops to our center so we can share your bounty with others. And don't forget our summer Back-to-School supplies collection! To volunteer or visit please call Renee at 762-9611 or e-mail at ifacdir@fchum.org

ADULT DAY HEALTH CENTER –
Rev. Ron Loughry, Director
A NOTE FROM OUR NURSE

I would like to personally thank you for all your hard work and time you put into the new Adult Day Center. I have been the ADC nurse here for 6 years. First I want to thank St. Bernard's parish for generously providing the space for the ADC for almost 18 years, without that gift the ADC wouldn't exist. Families always commented about the hominess of our place there in what used to be the convent. And it was great having the children's programs available for our intergenerational activities. As wonderful as that was I must say that in the old building there were some days it was difficult to take care of someone in my office due to the small size. A wheelchair wouldn't fit through the door and if I needed to use the bed for a sick participant the desk was in the way. This room was not meant for nursing having been a nun's bedroom. Although a tight space I always managed and am thankful St. Bernard's was kind enough to see the need to help the elderly and let us use this space even when pressured to find space for their own programs. The new building is like a dream come true! The whole building is beautiful and it may sound silly but when I saw the 4 handicapped restrooms I wanted to cry with happiness! There is so much room for wheelchairs and walkers. It sure makes assisting others a lot easier. Then when I saw my office I could feel my eyes fill up...wow room for the bed and space to walk around it! Room for a desk and plenty of cabinets to keep nursing supplies; I used to keep the blood pressure cuff in my desk drawer, now I can keep papers and forms in my desk because there are plenty of cabinets for supplies. It doesn't matter how you contributed, it may have been through hard physical labor, donating building supplies, organizing, planning, donating money, sewing, moving or cleaning or it may have been praying that this would all come together. However you helped I want to truly thank you. This community has pulled together and built something wonderful, a place where we can continue to care for people with smiles and hugs. We have been truly blessed, *-Nurse Alice Quinker, LPN.*

To visit or volunteer just call Ron at 762-9612 or e-mail at execdir@fchum.org

Fern Creek Highview United Ministries
BUILDING TO SERVE
BRICKS TO BUILD CAMPAIGN

Engraved 4" x 8" Engraved Brick Order Form

Each brick is available for a \$100 donation. "A major portion of each purchase goes directly to the FCHUM Building to Serve debt retirement."

Donor Information

Name _____

Address _____

City _____

State _____ Zipcode _____

Phone _____ E-mail _____

Brick Information:

Maximum 3 lines, 18 characters per line (including spaces and punctuation)

If mailing order form, send to:

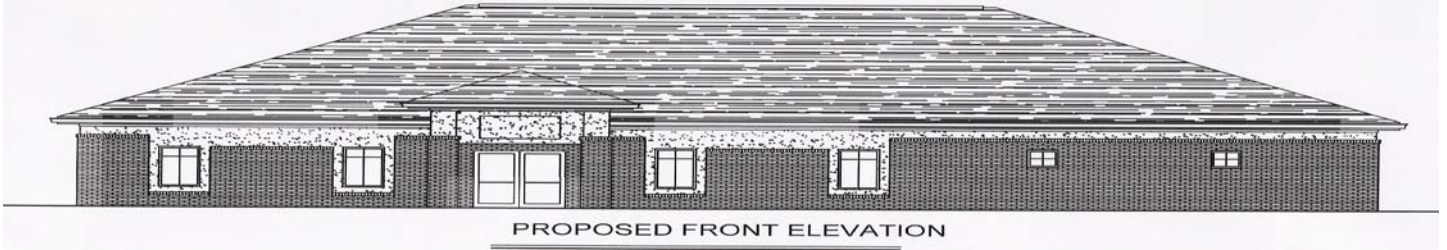
Fern Creek/Highview United Ministries

9300 Beulah Church Rd, Louisville, KY 40291

(502) 762-9608 fax: (502) 762-9609

e-mail: execdir@fchum.org

BUILDING TO SERVE

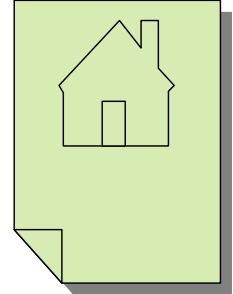


Cost

LESS THAN \$200,000 TO RETIRE BUILDING COST!

Funding

- Capital Campaign– **less than \$200,000 needed to pay off debt.**
- Over \$450,000 cash donations & seed money received over the past two years!
- Additional pledges committed
- Over \$150,000.00 in-kind gifts and services already received
- Church, Civic, Business, Government, and Community Partnerships
- Naming Opportunities available for Food Pantry, Conference Room, Service Areas
- Memory and In Honor Bricks



The Capital Campaign: What It Will Take

1 gift at...	\$ 200,000
4 gifts at...	\$ 50,000
8 gifts at...	\$ 25,000
20 gifts at...	\$ 10,000
40 gifts at...	\$ 5,000
80 gifts at...	\$ 2,500
200 gifts at...	\$ 1,000
400 gifts at...	\$ 500
2,000 gifts at...	\$ 100



And many more of varying amounts, all important to our cause...

Contributions can be sent to Fern Creek Highview United Ministries, "BUILDING TO SERVE" campaign 9300 Beulah Church Rd, Louisville, KY 40291. For more information call (502) 762-9608 or e-mail execdir@fchum.org

PRAYER TASK FORCE

This is a Task Force I think all of us can be involved in - all of our pastors, and all of our churches, and all of our church members, and just maybe all of our community!

Mondays pray for the work of FCHUM in general.

Tuesdays pray for the IFAC and its specific work.

Wednesdays pray for the ADC and its specific work.

Thursdays pray for all the people we minister to, the hungry individuals and families, the frail older adults and their caregivers, the homeless, the disabled, the families involved in divorce, those in financial crisis.

Friday pray for the volunteers and staff engaged in this work.

Summer Benefit Concert

Time & Place to be announced

Generally sometime in August.

Fern Creek Highview United Ministries

NEW CONTACT INFORMATION:

New phone numbers and addresses.

Address for all Fern Creek Highview United Ministries programs will be –

9300 Beulah Church Road, Louisville, KY 40291

New phone numbers will be: (502) area code

Central Office: 762-9608, fax: 762-9609

Individual & Family Assistance Center: 762-9610 & 9611 , fax: 762-9609

Adult Day Health Center: 762-9612, fax: 762-9613

E-mail addresses remain the same.

Fern Creek/Highview United Ministries is a not-for-profit 501 C 3 organization and all donations are tax deductible. IFAC is funded in part by Louisville/Jefferson County Metro government. The ADC is funded in part under a contract with KIPDA and the Commonwealth of Kentucky, Cabinet of Health & Family Services with funds from the U.S. Department of Health & Human Services and with funds from Louisville/Jefferson County Metro Government.

**FOR MORE INFORMATION CALL OUR OFFICE 762-9608
OR VISIT OUR WEBSITE AT FCHUM.ORG**

Return Service Requested

**NON PROFIT ORG
UNITED STATES
POSTAGE PAID
LOUISVILLE, KY.
40228
PERMIT #0593**

**Fern Creek Highview United Ministries, Inc.
9300 Beulah Church Road
Louisville, KY 40291-2708**